



Existing Conditions Report

for the

Brook Farm Barn Complex

Lenape Lane, New Platz, NY

June 2024

Prepared by :

Mohonk Preserve Inc.

Chuck Reid, Director of Stewardship

Paul C. Huth, Mohonk Preserve Director of Research Emeritus

Stephen D. Stewart-Hill, Volunteer Photographer

Page Left Intentionally Blank

Table of Contents

Acknowledgements Page	1
Executive Summary	2
Brook Farmhouse and Barn Complex History	4
National Register of Historic Places (1973): The Lake Mohonk Mountain House Complex Map	7
Existing Conditions – Contributing Structures Map	8
BARN NO. 1	
Photo Perspective Map	9
Building Existing Conditions Documentation	10
OUTBUILDING NO. 1 RUN-IN	
Photo Perspective Map	14
Building Existing Conditions Documentation	15
BARN NO. 2	
Photo Perspective Map	17
Building Existing Conditions Documentation.....	18
BARN NO. 3	
Photo Perspective Map	20
Building Existing Conditions Documentation.....	21
BARN NO. 4	
Photo Perspective Map	23
Building Existing Conditions Documentation	24

Appendices

- Appendix A - Photo Index Narrative
- Appendix B – Photo Index Barn No1 & Existing Conditions Photos
- Appendix C - Photo Index Outbuilding No1 & Existing Conditions Photos
- Appendix D - Photo Index Barn No2 & Existing Conditions Photos
- Appendix E - Photo Index Barn No3 & Existing Conditions Photos
- Appendix F - Photo Index Barn No4 & Existing Conditions Photos
- Appendix G - Existing Barn Inspections (Stinemire Engineering)
- Appendix H - Existing Conditions Report for Brook Farm House (Coppola Associates)
- Appendix I - Development Plan Letter of Resolution: 23PR04935
- Appendix J - Brook Farm Complex Redevelopment Plan (Barton & Loguidice)

ACKNOWLEDGEMENTS

Mohonk Preserve Inc.

Kevin Case, President/CEO

Paul C. Huth, Mohonk Preserve Director of Research Emeritus

Chuck Reid, Director of Stewardship

Stephen D. Stewart-Hill, Volunteer Photographer

Gretchen Reed, Director of Marketing & Communications

Ed Pestone, Associate Director of Land Protection & GIS

Consultants

Carolyn Coppola, Coppola Preservation Consulting

John Stinemire, Stinemire Engineering

Ryan Cornelison, Stinemire Engineering

Ryan B. Weitz, Barton & Loguidice Engineering

Executive Summary

Centering Conservation and Stewardship at Brook Farmhouse

Mohonk Preserve is rehabilitating the historic Brook Farmhouse and Barn complex, located in the Mohonk Preserve Foothills area, for adaptive use as the new home of the Preserve's Conservation and Stewardship teams.

The Preserve's Conservation team includes a staff of conservation science and land protection professionals, along with visiting researchers and volunteers, who study and monitor regional habitats and protect Preserve lands and conservation easements. Our Stewardship team is responsible for the planning and management of the Preserve's land and facilities including our historic carriage roads and trails, the Visitor Center and other Preserve buildings, facilities, and equipment.

Mohonk Preserve uses ecological knowledge to drive land conservation and management decisions, and engage the public, making our Conservation and Stewardship teams integral to our organizational mission and goals. Relocating staff members to the Brook Farmhouse will result in significant benefits to these efforts. The building is easily accessible to the local community and is in near proximity to many habitats and ecosystems that are critical to this work. Its spacious rooms and capacity to support technology will facilitate research, lab work, training, public programming, and land and facilities management.

For decades, Mohonk Preserve's Conservation program has been headquartered at the Daniel Smiley Research Center at the Mohonk Mountain House. As a result of the continuing growth of the Preserve's Conservation team, which now includes Conservation Science and Land Protection, along with the need for additional staff housing at the Mountain House, the Preserve began evaluating alternative sites for the Conservation team to relocate. The Brook Farmhouse was a natural choice, given its proximity to existing research plots along with enhanced community programmatic access.

The 3,300 square-foot Brook Farmhouse was built in the late 1800s and acquired by the Smiley family in 1906 to support Mohonk Mountain House operations. In 2014, Mohonk Preserve purchased the farmhouse, along with over 800 acres of surrounding land for conservation purposes. In 2020, a new trailhead was built at the nearby Testimonial Gateway with ample parking and amenities to provide recreational access to the land.

The Brook Farmhouse project is part of a multi-year initiative to renovate the entire Brook Farm Complex. For the current phase, we will rehabilitate interior historic features to improve energy efficiency and create workspaces, community meeting space and the functions of a wet lab. Additional amenities will include electric vehicle charging stations, a visitor orientation kiosk, and native plantings. The farmhouse's existing footprint will remain the same.

The second phase of the project will include repurposing an existing barn on the site and establishing a maintenance building for Stewardship staff, equipment, and supplies. Once both the Conservation and Stewardship programs are in operation at the Brook Farm Complex, up to 20 permanent and seasonal staff members will work at the site.

Rehabilitating the Brook Farmhouse for programmatic use clusters recreational and work opportunities within walking distance of New Paltz. The project preserves rural and scenic character, supports climate change resilience, facilitates public access, and advances on-site community education programs and community science volunteer opportunities.

The Brook Farmhouse Project will enhance Mohonk Preserve's capacity to serve a variety of community groups, including schoolchildren, aging populations, and individuals with mobility disabilities, as well as conservation scientists and outdoor recreationists such as hikers, cyclists, equestrians, and birders. The area includes a New York State Birding Trail and is adjacent to the popular River-to-Ridge Trail, jointly operated by the Preserve and Open Space Institute.

The project is one of several outcomes from ten years of community participation in the Mohonk Preserve Foothills area, resulting in multiple plans for site development, trail improvements, and the implementation of new trailhead facilities. We have received input from Mohonk Mountain House, the Town of New Paltz Historic Preservation Commission, the New York State Historic Preservation Office, and volunteers through the Preserve's Land Management & Facilities Committee. On February 8, 2024, the Preserve hosted an information session at the Visitor Center for neighbors to review and discuss the project.

Mohonk Preserve has completed the site development plan, historical documentation of the farmhouse, architectural, engineering, and construction documents for the Brook Farmhouse renovation. The plans have been submitted to the Town of New Paltz Planning Board and received conditional approval (March 2024).

A condition for approval requires the Preserve to complete a historical documentation of the barn complex. Coppola Associates completed an existing condition report for the Farmhouse as an update to the National Historic Designation and as part of the development plan process with the Town of New Paltz.

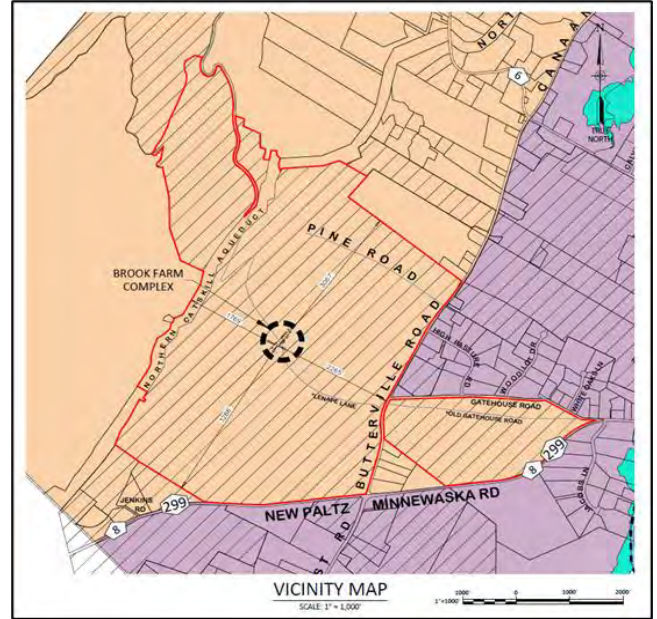
This report has been prepared to document the existing conditions for the barn complex per the guidelines set by the NYS Office of Parks, Recreation and Historic Preservation in Resolution 23PR04935. "Barns 1 through 4 shall be documented with photographs prior to and subsequent to demolition..." One (1) copy of the report will be delivered to the OPRHP for forwarding to the New York State Archives, one (1) copy of the report will be delivered to the Town of New Paltz Historic Preservation Commission, and one digital copy of the report for OPRHP to be uploaded to CRIS.

Brook Farmhouse and Barn Complex History

Property Owner:
Mohonk Preserve
PO Box 715
New Paltz, NY 12561

National Register of Historic Places:
The Lake Mohonk Mountain House Complex (1973)

Site Location:
60 Gatehouse Road
New Paltz, NY 12561
41.749352, -74.135606



Brook Farm is located on the west side of Buttrville Road, in the Town of New Paltz. It is part of the Mohonk Preserve Foothills area, made up of five former farm homesteads located “within the boundaries of the Lake Mohonk Mountain House Complex Historic District” (Fig.1), (Coppola, 2023).

The use of the Brook Farm location dates back to the early nineteenth century, when a homestead at that site appears on the David H. Burr “Map of the County of Ulster,” published in 1829 (Fig. 2). The farm was occupied by the George DuBois family, as recorded in the 1850 U.S. Census. It was considered a “prosperous” farm in the 1865 Agricultural Statistics, with all but 18 of 192 acres, considered unimproved. A photograph of the east slope of the ridge nearby, taken in 1892, shows the extent of agricultural clearing (Fig. 3).

The Brook Farm homestead, outbuildings, and 225 acres of land became part of the Mohonk Estate in September 1906. It was called Brook Farm as part of the Mohonk farm and field management designation. It remained part of Mohonk ownership until 2011.

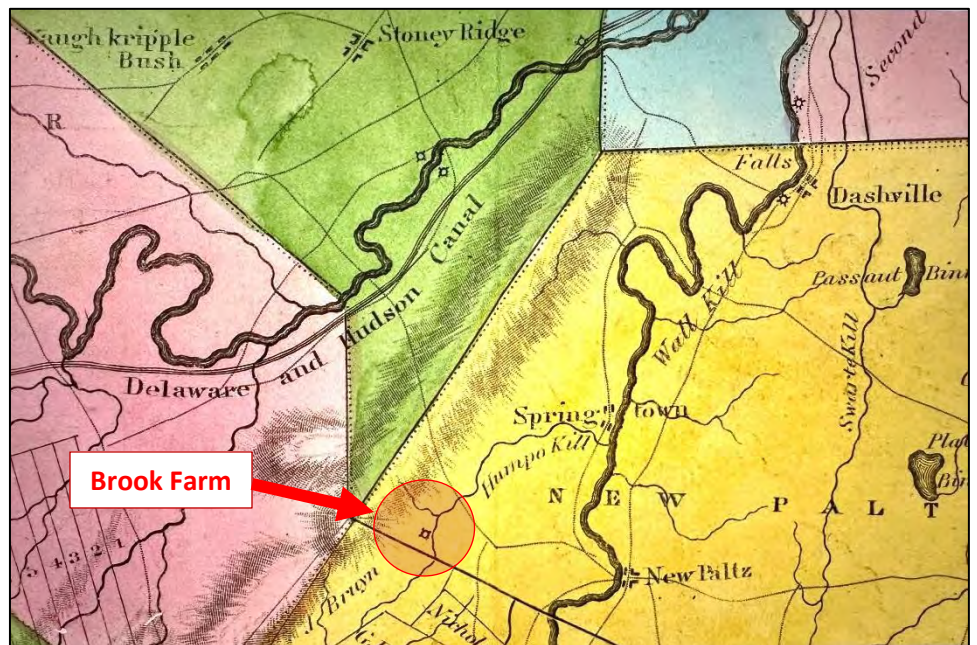


Fig. #2 David H. Burr, map of Ulster County 1829

One of the few vintage photographs showing the Brook Farm area just nine years after the Mohonk purchase, is found in the New York State Archives, Digital Collections—a lantern slide from 1915, entitled “View of Sky Top Ledge in the Shawangunk Mountain Range in Ulster County. A farm, hilly farmland, and two roads can be seen in the foreground.” It was taken from near Butterville Road, and clearly shows the Brook Farm House and adjacent series of Mohonk barns and silos existing at that time (Fig. 4).



Fig. #4 Brook Farm 1915 NYS Archives

The major change to the Brook Farm outbuildings occurred on August 3, 1935, when a major fire of accidental origin consumed the milk house, where it started, the large hay barn and some 200 tons of hay, three large silos, and the cattle barn, including the milking machines and other farm equipment. The 70 head of resident milk cows had just been let out to pasture. After three and a half hours the firemen had the fire under control, but “the big barn was a mass of smoldering beams and planks.” Fortunately, the firemen were able to save the Brook Farm House, and three of the adjacent farm buildings, including Barn 2 and Barn 3, the subjects of this report (Figs. 5, 6, 7).



Fig. #5 Brook Farm Fire August 3, 1935

Fig 5



Fig. #6 Brook Farm Fire August 3, 1935



Fig. #7 Brook Farm Fire August 3, 1935

Lake Mohonk Mountain House Complex: Foothills Areas

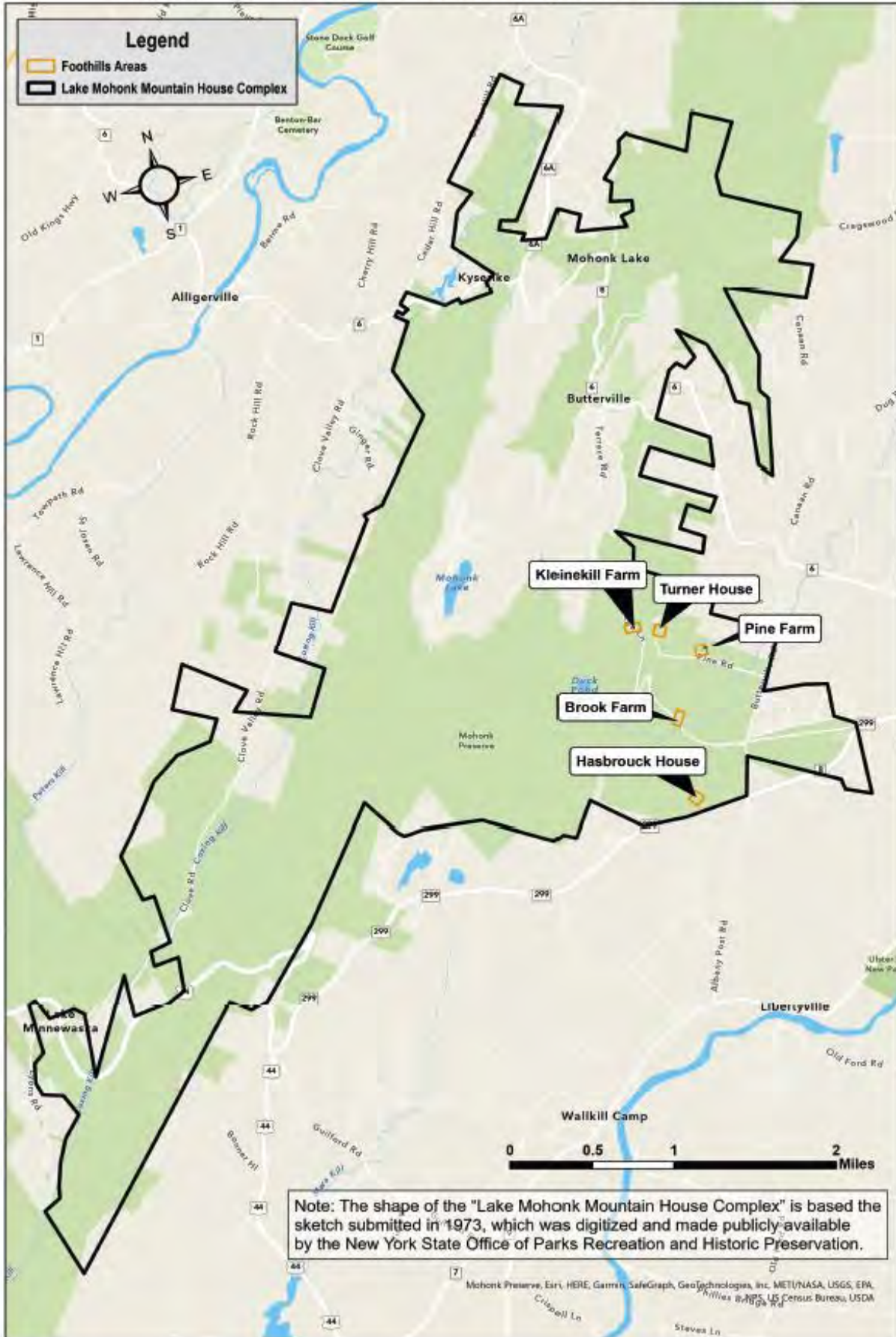


Fig. #1 Map of Lake Mohonk Mountain Complex

Mohonk Preserve – Brook Farm Historic Barns Documentation

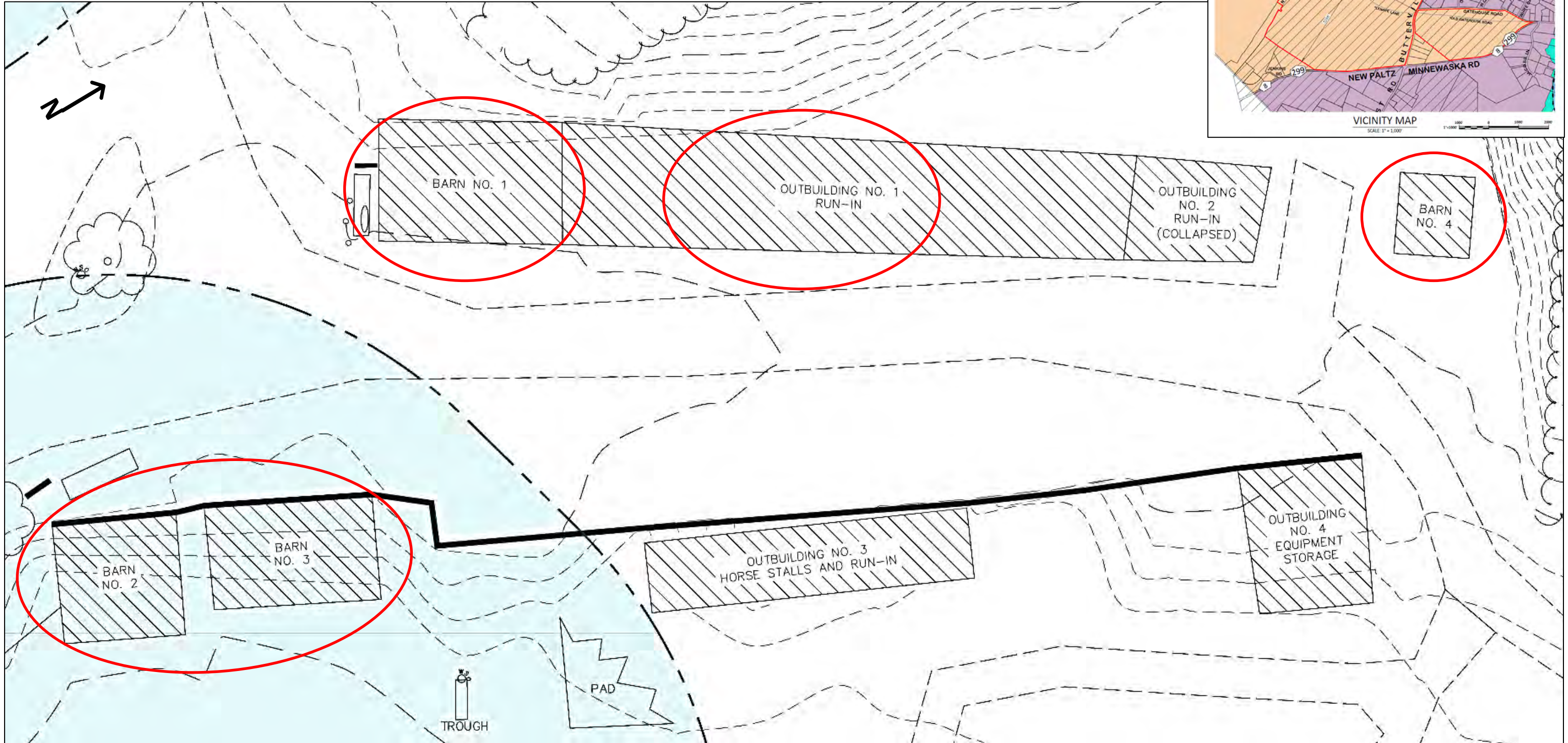
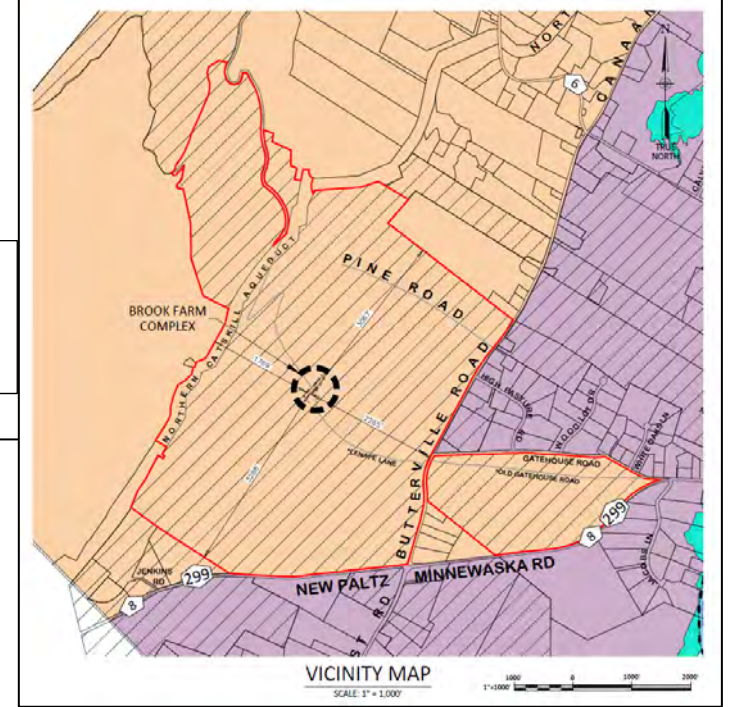
Existing Conditions – 06.09.2024

Site Map (Sheet 1 of 6)

National Register of Historic Places (1973): The Lake Mohonk Mountain House Complex (NY State Office of Historic Preservation - [Contributing features](#))

Address: 60 Gatehouse Road
New Paltz, NY 12561
41.749352, -74.135606

Barns 2,3, & 4 slated for demolition as part of a development plan, along with *Outbuildings 1,2,3 & 4 (non-contributing)*.
Approved by the Town of New Paltz, NY (03.24.24):
Project #: PB22-423 Mohonk Brook Farmhouse Rehabilitation Project

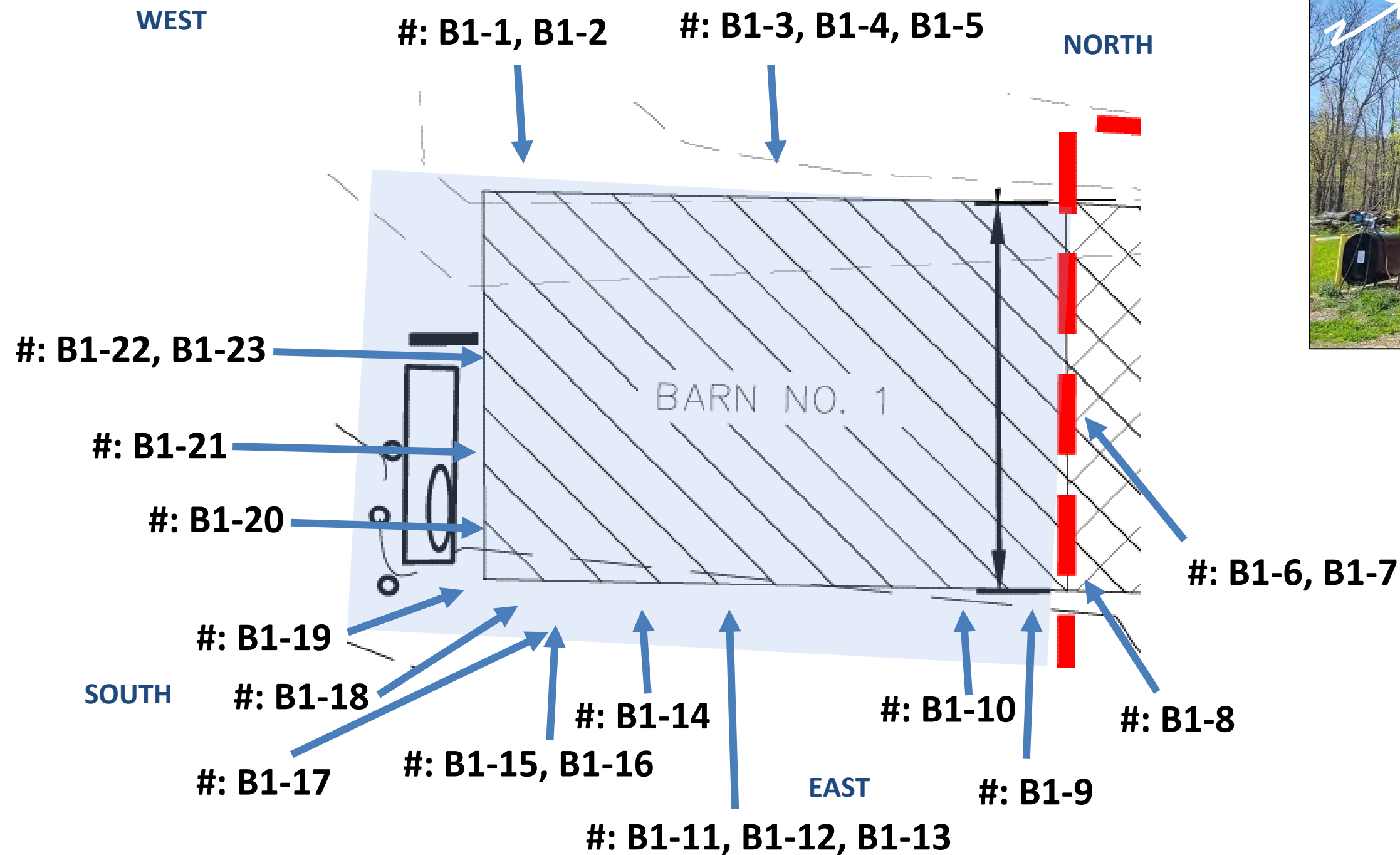


BARN NO. 1

Mohonk Preserve – Brook Farm Historic Barns Photo Documentation (Sheet 2 of 6)

Existing Conditions – 06.09.2024

National Register of Historic Places (1973): The Lake Mohonk Mountain House Complex (NY State Office of Historic Preservation - Contributing features)

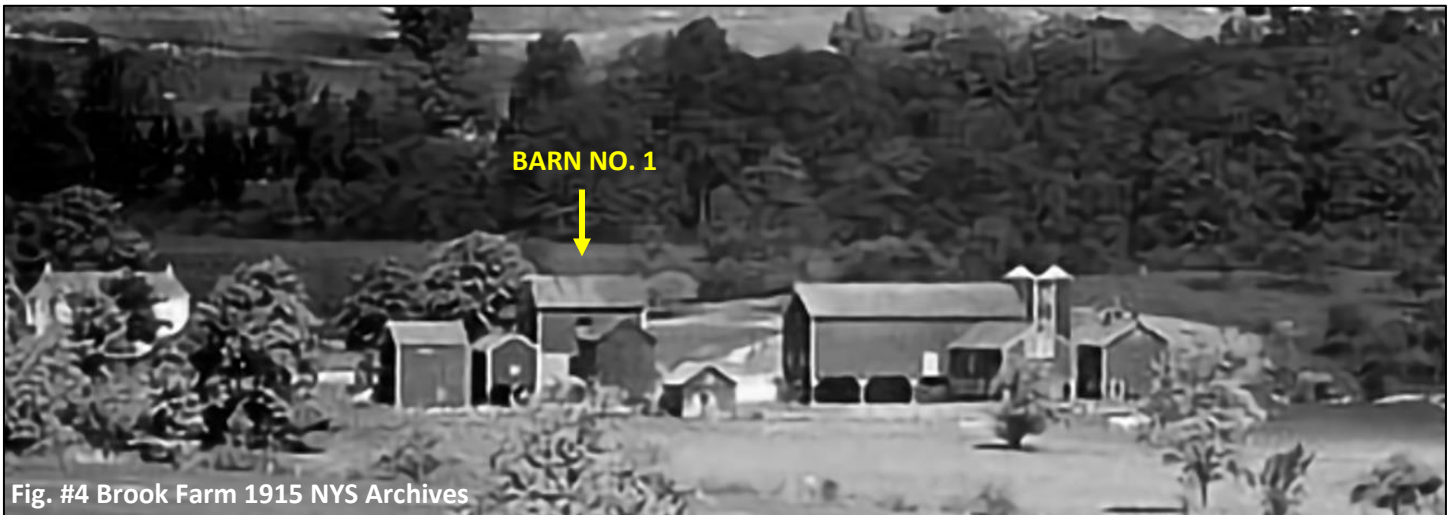


Photos
#’s: B1-24 – B1-70
Inside Barn

Photos
#’s: B1-71 – B1-76
Hardware

BARN NO. 1 (Fig 12)

Brook Farm Existing Conditions Documentation



The building date for this large tall hay barn along Lenape Lane, on the West side of the Brook Farm barnyard, is unknown. It appears in the 1915 photograph from the New York State Archives (Fig 4). It's original framing, consisting of hand-hewn timbering and mortise and tenon joinery, indicates a building date in the 19th century (Fig. 8 & 9). Many of the vertical hand-hewn timbers show unused framing slots indicating possible reuse from some earlier building frame. Ladders are built on the East wall and partially on the South wall below the hay carrier roof peak door on the main floor level. One is built mostly into the wall framing on the North corner extending from the eaves through an opening in the floor to the foundation level (Fig. 10). Major floor and roof reframing with domestic sawed lumber likely occurred after Mohonk took ownership of Brook Farm in 1906 (Fig 11).

The building is 24 by 36 feet in size, built into the slope on its western side, supported there by a retaining wall of dry stack mostly conglomerate stone, with an adjacent interior later-poured concrete wall (Fig 12 & 13). The sill on top of this wall, and the adjacent floor above is heavily and extensively decayed due to moisture and ground contact (Fig. 14). The South foundation has a concrete knee wall and sawed wood framing above (Fig 15). The North foundation wall is poured concrete about five feet tall, inside a stone retaining wall, topped by a short wood



Fig. ##12 Brook Farm Barn 1 built into slope



Fig. #27 Brook Farm Barn 1 hay carrier rail

framed “cripple” wall (Fig 16). The “cripple” wall is crowned by a large hand-hewn timber. In the “cripple” wall were two horizontal window frames (Fig 17). The North/South oriented floor joists are of two inches by ten inch sawed lumber supported by large tree pole supports some with the bark still on and additional vertical posts extending to the floor. At some time the floor joists and adjacent flooring was whitewashed (Fig 18). All of the foundation sills show deterioration due to moisture and ground contact. The North wall has sustained major sideways movement as a result of tension placed on it by the attached open front long shed and lack of foundation depth and stability (Fig 19). In the back half of the basement ground level room are the remains of four roughly constructed stalls (Fig 20).

The large single floor to roof peak main room is fully open for loose hay storage, with three original bents (Fig. 21 & 22). The large upright hand hewn central bent support posts, especially the Eastern post, show major cracking and mortise and tenon failure (Fig 23). A large single hand-hewn timber that is part of the North bent supporting the whole North wall and attached sawed lumber wall framing is broken near its middle and pulled outward by at least a foot (Fig 24).

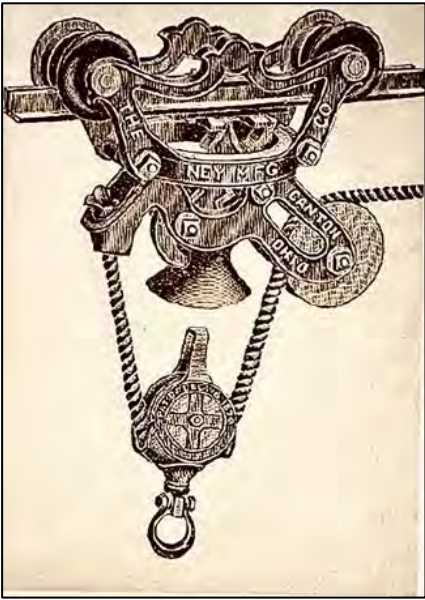
To cover a hole in the hay mow floor an old rusty “NY 55” license plate was nailed in place (Fig 25). A large framed door originally opening about a third of the barn’s West wall was at some time permanently closed (Fig. 26). It had been supported by a long rail and rollers above, the rollers likely removed when the door was fixed closed. The bottom half of the door is now mostly gone. Its permanent closure might have occurred in the late 1940’s with the change at Mohonk of storing hay from loose to baled.



Fig. #28 Brook Farm Barn 1 hay carrier rail system



Fig. #32 Brook Farm Barn 1 north wall suspended pulley



A large hinged ventilation and hay carrier door opening under the roof ridge on the top of the South wall is partly open from deterioration (Fig. 27). Above this roof ridge door are the remains of a hay carrier rail, originally framed and covered over and extending several feet beyond the edge of the building roof overhang.

The patented hay carrier two-rail system was attached from the outside to the underside of the roof ridge across the whole inside top of the barn to the North end (Fig. 28). The hay carrier allowed for loose hay to be efficiently bundled and transported upward and through the roof ridge door into the barn to the hay pile in the mow where it could be spread evenly by hand on the top of the increasing pile. The pulley mechanism of the hay carrier is still on the rails just inside the roof ridge door (Fig. 29). A row of black numbers on the hand-hewn southeast corner post might be a count record of the number of hay carrier loads, although we will never

know for sure what they record (Fig. 30 & 31). There is a framed window opening on the North wall below the roof ridge with a pulley suspended from its middle top directly below the peak of the roof and the hay carrier rails (Fig. 32). It may have been part of the roping network for pulling the hay carrier in and out of the building for hay distribution.

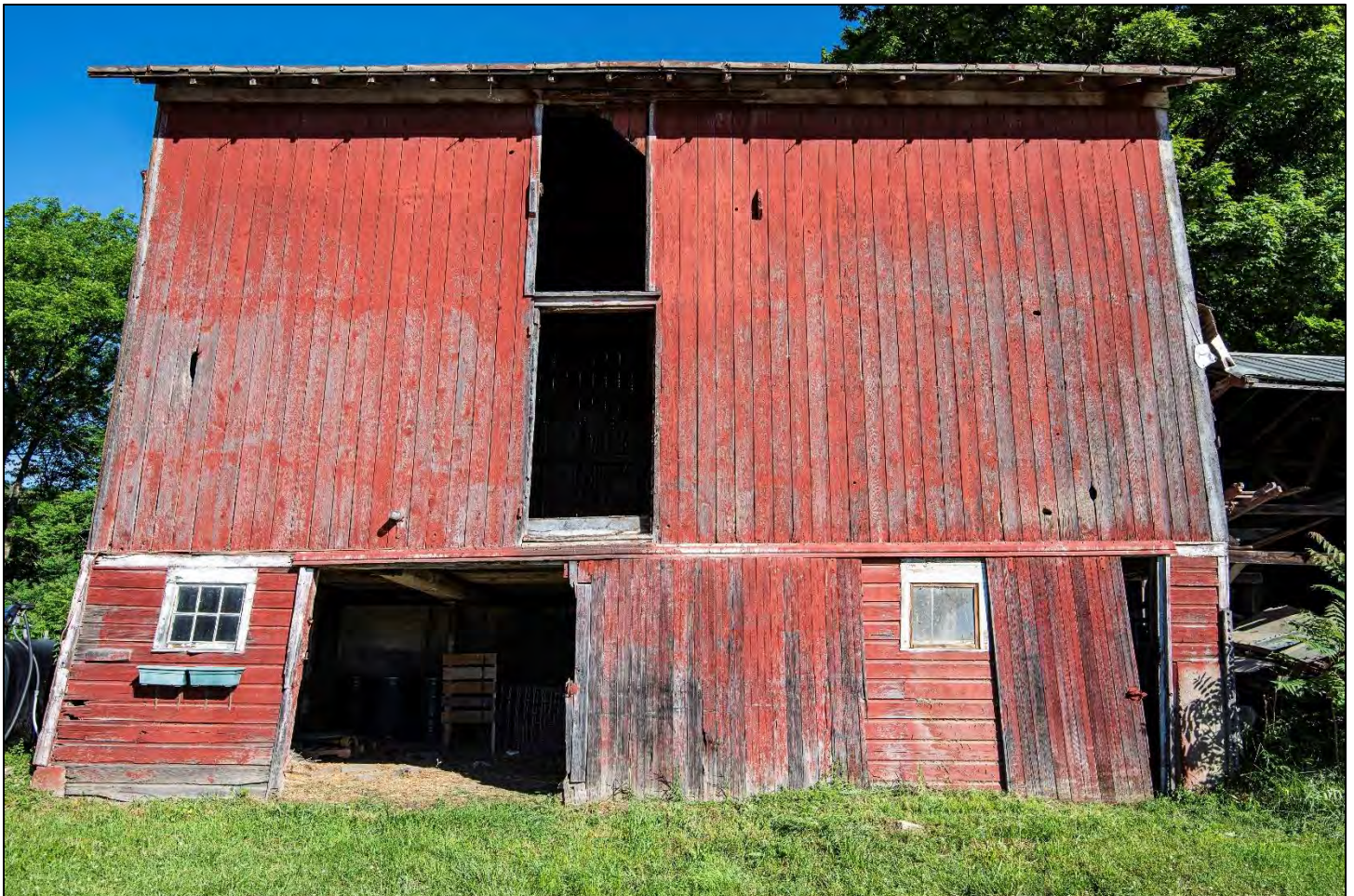


Fig. #33 Brook Farm Barn 1 barnyard doors

There are two East front ground level barnyard doors both supported by a continuous enclosed rail and rollers (Fig. 33). Left of the larger ground level door on the South side is a six-pane window (Fig 34), and on the adjacent South wall are two six pane windows side by side (Fig 35). A small window also existed to the left of the smaller door on the North side (Fig. 36). On the East facing wall two door openings one above the other extend from the main floor to under the eaves, the upper door having been suspended with a top rail and roller.

The siding of the barn consists of two types. Long vertical tongue and groove boards make up the siding on the East, South, and West sides of the main hay mow room (Fig. 37). On the barnyard foundation level on the South wall is horizontal shiplap siding, as well as on the whole North wall attached to sawed framing (Fig. 38). Above the shed roof attached to the North wall considerable siding is missing the large opening allowing for major weather penetration causing extensive frame and floor deterioration (Fig 39). The exposed barn wall framing and siding at the shed attachment shows significant breakage and deflection outward from the large broken main hand hewn North bent beam support failure (Fig 24). The upper bent beam is mostly out of the weather and looks still intact (Fig. 40)



The roof rafters are of domestic two inch by six inch sawed lumber set widely at two-foot intervals. The roof was clad with irregularly shaped and spaced broad board sheathing, probably at one time topped with cedar shakes (Fig 41). The roof sheathing shows staining and deterioration from leaking, the whole roof sometime prior to 1935 covered with a standing seam galvanized sheet metal roof, it too showing deterioration, rusting, and patching (Fig. 42).

Fig. #30 Brook Farm Barn 1 southeast corner post

OUTBUILDING NO. 1 RUN-IN

Mohonk Preserve – Brook Farm Historic Barns Photo Documentation (Sheet 3 of 6)

Existing Conditions – 06.09.2024

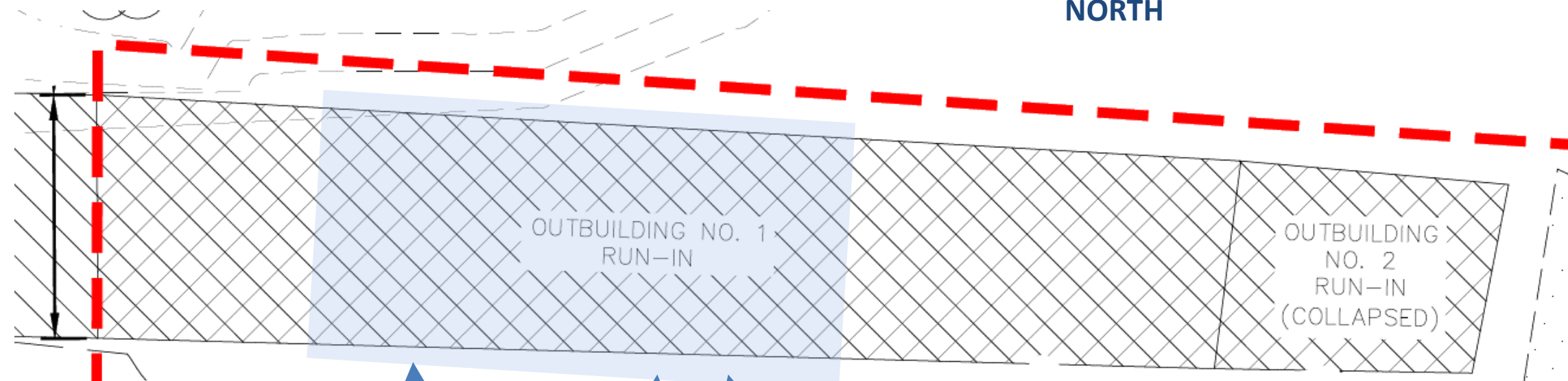
National Register of Historic Places (1973): The Lake Mohonk Mountain House Complex (NY State Office of Historic Preservation - Contributing features)

WEST



This section was present in 1935.

NORTH



SOUTH

#: OB-1

#: OB-2

#: OB-3

#: OB-4, OB-5

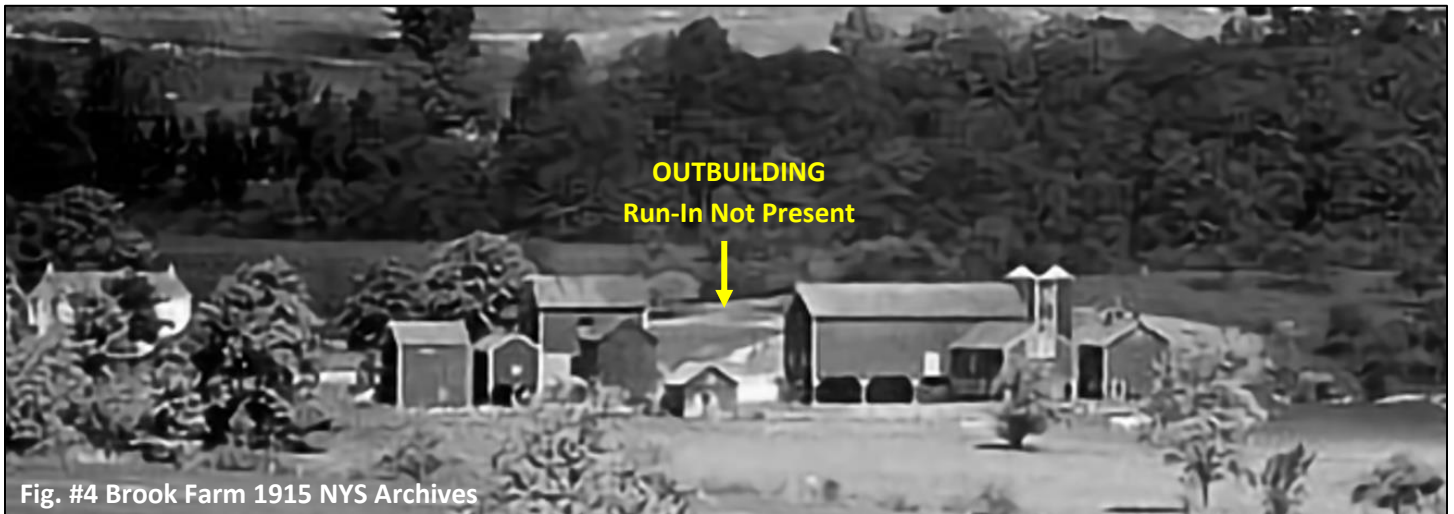
#: OB-6

EAST

Photos

#'s: OB-7 – OB-11
Inside Outbuilding

OUTBUILDING NO. 1 RUN-IN



As evidenced from the August 3, 1935, photographs of the major Brook Farm barn fire, an open free-standing shed of four drive-in bays each some 10 feet wide existed about 16 feet North of Barn 1 (Fig. 5). Today that shed is incorporated in the series of eight open drive-in shed-roofed bays for equipment storage (Fig 43).

The additional four bays to the North of the main shed, attached to the former exterior red-painted shiplap siding of the main shed, were built with inferior framing and materials and is seriously deteriorated and collapsing on its North end (Fig. 44). Its North end siding consisted of vertical board and batten painted red. A small building the once stood beyond the North end of the sheds has collapsed and is in a pile (Fig. 43). At some time the space between the main shed and Barn 1, about 16 feet to its South, was closed in by an additional and similarly constructed shed used for lumber storage (Fig. 45). Its frame is attached to the former exterior red painted shiplap siding of the main shed facing South to Barn 1 (Fig. 46). The main shed did not appear in the 1915 New York State Archives photograph showing Brook Farm.



Fig. #5 Brook Farm Fire August 3, 1935



Fig. #43 Outbuilding drive-in sheds

The main shed shows a framing mix of sawed lumber, tree poles, and a considerable amount of recycled hand-hewn timbers spliced and overlaid together both in roof and vertical support. While set on concrete footings, many vertical support posts are displaced and decayed. The roof sheathing boards of the main shed are placed vertically from roof peak to drip edge across timber rafter framing. Some of the timber rafter framing shows major decay (Fig 47). The shed North of the main shed had a more conventional sawed lumber framing but was very lightly made with support of only two by four-inch roof rafters. Some rafters had been doubled to carry the roof load. Here the sheathing boards are run horizontally (Fig. 44). Originally, all the sheds were roofed with green mineral surfaced rolled 90lb. tar paper roofing. At some time a sheet metal roof was added over the tar paper. These combined sheds are in a major state of deterioration, the structures very weak with many decayed, loose, and broken framing members and timbers, pulling away from attachment to Barn 1.

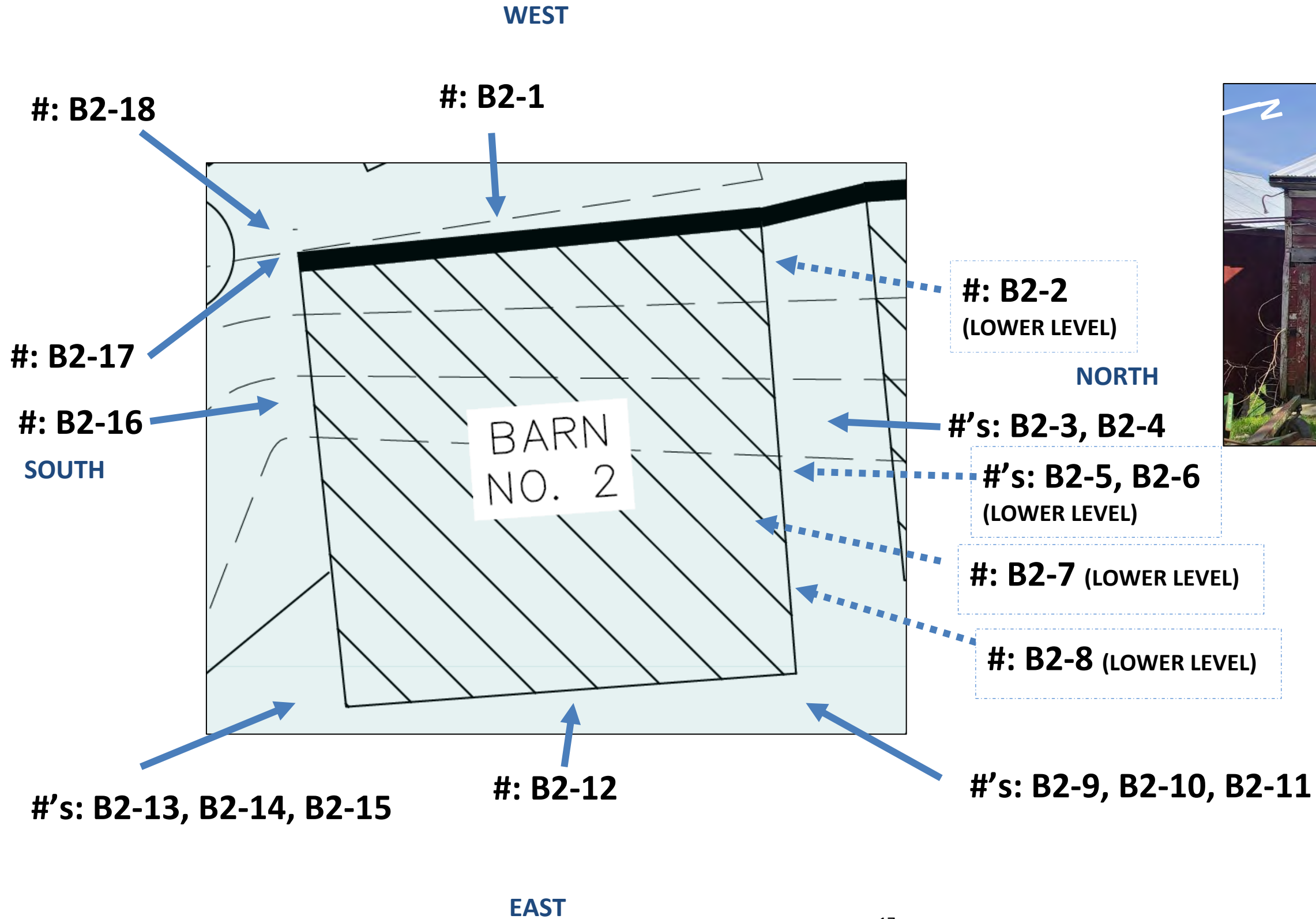
The sheds show charred roof timbers under their peaks from an accidental fire which occurred on January 28, 1941. It was apparently caused by a "short circuit in the wiring of a (car)". Besides the (car), a hay tedder and side delivery hay rake were lost. Several tractors and other farm equipment was able to be moved and saved. It was put out when firemen arrived. Damage was estimated at less than \$500.

BARN NO. 2

Mohonk Preserve – Brook Farm Historic Barns Photo Documentation (Sheet 4 of 6)

Existing Conditions – 06.09.2024

National Register of Historic Places (1973): The Lake Mohonk Mountain House Complex (NY State Office of Historic Preservation - Contributing features)



**Photos
#’s: B2-19 – B2-35
Inside Barn**

BARN 2 (Fig. 48)



The building date of this small barn, closest to Lenape Lane, is unknown (Fig. 49). It is located within 10 feet of the adjacent Barn 3 (Fig. 50). It appears in the 1915 photograph from the New York State Archives. It is a single-story wood frame building, 24 feet by 24 feet in size, built into the slope on its western side, where it is supported by a dry stack retaining wall of native conglomerate stones (Fig. 51). It has an upstairs under roof storage area, and a basement beneath with a low ceiling whitewashed area with stalls on a concrete floor. The basement by its low height, was possibly used for pigs, young cows, or goats, as it was far too low for use by standard horses. These bottom stalls were accessed by two different doors, the existing one on the northeast corner supported outside by two top rollers on a track, the rollers labelled Myers Sure Grip, made in Ashland, Ohio (Figs. 52, 53, 54, 55).

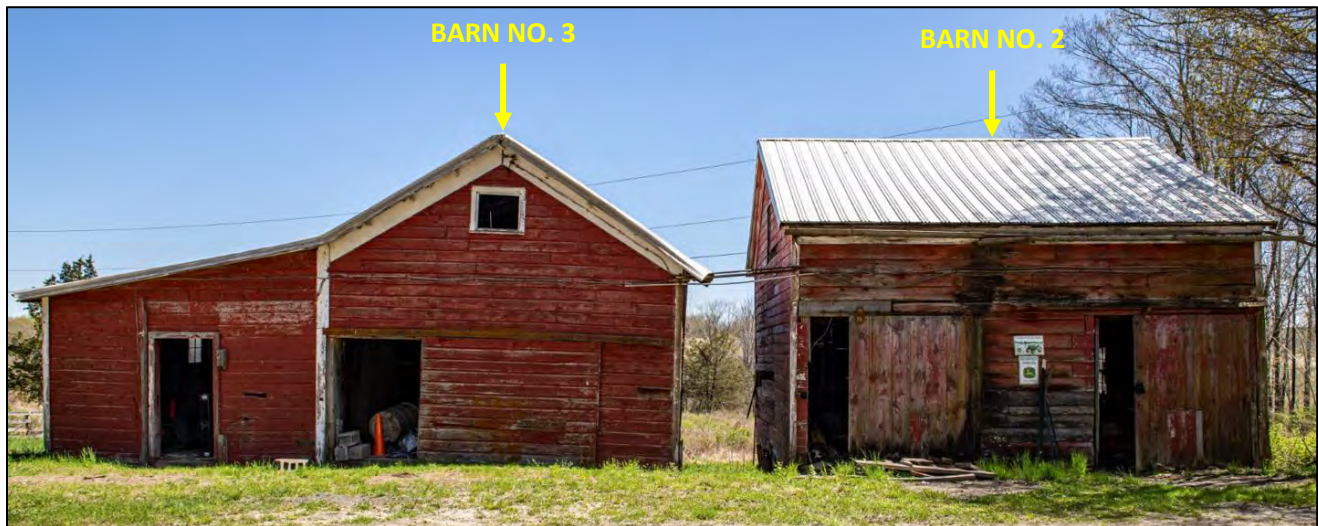


Fig. #50 Brook Farm Barns 2 and 3 from West

The framing of the barn is a mix of mostly rough cut domestic sawed lumber, with older and larger hand-hewn timbers repurposed and used in key support positions. Domestic rough sawed main floor joists are supported by native tree pole supports below (Figs. 56, 57, 58, 59). This mix of lumber indicates a build likely after Mohonk took ownership of Brook Farm in 1906.

The supporting six-foot-tall stone foundation retaining wall on the west side shows heavy deterioration from the annual freeze/thaw cycle, and settlement. A tree pole support beam added adjacent to the top of the stone wall inside has broken and completely failed (Fig.60). Wood pole foundation support posts in contact with the ground, have failed, rotted, or settled (Fig. 61).

The upstairs floor joists are supported by a large repurposed hand-hewn beam (Fig. 62). Many of the joists are rough sawed tree poles with the bark still on (Fig. 63). Upstairs in the north corner wire caging was used to confine domestic fowl, probably chickens (Fig. 64). Outside access to the barn yard was made by two front doors both supported by top rollers on a continuous single rail across the front of the barn (Fig. 65). Sheathing is shiplap of two different sizes and is heavily weathered. In some places the sheathing has holes or is missing, thus allowing for considerable outside exposure causing rotting of the wall studs (Fig. 66). Some standard size windows were installed with six over six glass panes, while others were just six panes installed both vertical in the basement and horizontal in the attic (Fig. 67). One single vertical four pane window was installed near the east corner of the main room (Fig. 68).

The roof of Barn 2 was constructed with its peak running approximately north to south, draining the roof surface directly over the two front doors (Fig. 48). The roof was clad with irregularly shaped and spaced broad boards topped with cedar shakes. Two layers of asphalt shingles were added on top of the cedar shakes. The roof shows extensive deterioration and rotting from leaking as evidenced by staining and missing sheathing inside. The undersized and widely spaced rough sawed roof rafters, some with bark still on, were reinforced in places to help support the roof load. Many show deflection and decay (Figs. 69 & 70). The roof was covered over with corrugated metal roofing (Fig. 48).



#51 Brook Farm Barn 2 Lower Level Stone Retaining Wall



Fig. #69 Brook Farm Barn 2 Roof Cladding



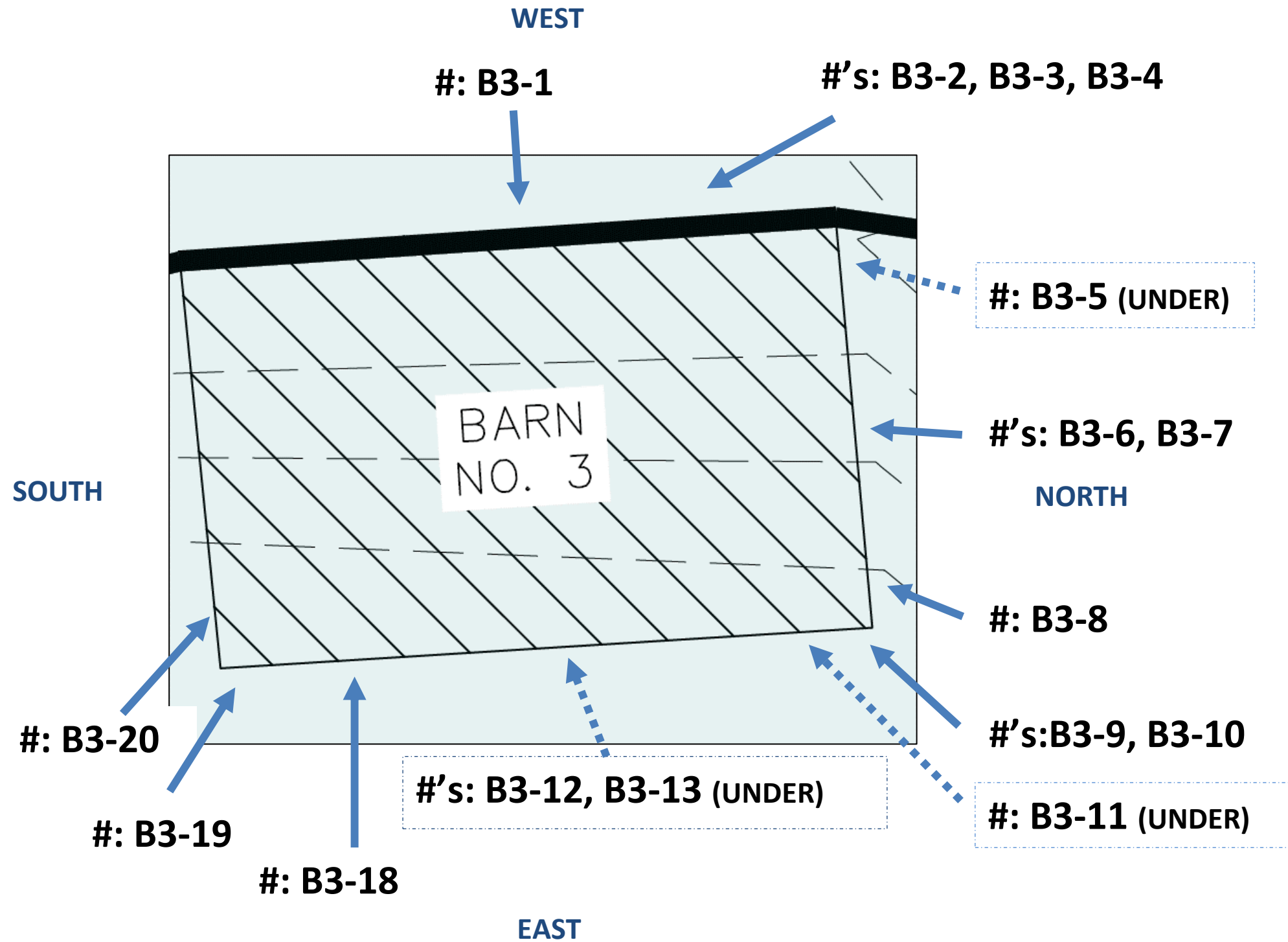
Fig. #67 Brook Farm Barn 2 Six over Six Windows

BARN NO. 3

Mohonk Preserve – Brook Farm Historic Barns Photo Documentation (Sheet 5 of 6)

Existing Conditions – 06.09.2024

National Register of Historic Places (1973): The Lake Mohonk Mountain House Complex (NY State Office of Historic Preservation - Contributing features)



Photos
#'s: B3-21 – B3-39
Inside Barn

BARN 3 (Fig. 71)



Fig. #4 Brook Farm 1915 NYS Archives

This barn is located adjacent to Barn 2 (Fig. 50). Its construction date is unknown. It is shown in the 1915 New York State Archives photograph. It is a single-story wood frame barn, 33 feet by 20 feet in size, with a small partial walk up attic area (Fig. 72). It is built into the slope on its western side, supported by the same retaining wall. The wall has had major settlement and movement, the north end now collapsed allowing for sinking and settlement of the building (Fig. 73).



Fig. #50 Brook Farm Barns 2 and 3 from West

The foundation of both the original section and a shed addition are supported by tapered concrete piers. Most of the piers are tipped from vertical as a result of being open to weather exposure and frost movement. Two piers under the north side of the shed addition were formed by garbage can forms (Fig. 74). For extra support, tree poles were added under the floor joists. The lower level of the original building, on the east side, has tapered openings for wider access (Fig. 75).

Framing is mostly of rough cut domestic sawed lumber, some still with the bark on, including the upstairs floor joists and roof rafters. A few pieces of large old repurposed hand-hewn support timbers are mixed in (Figs. 76,

77, 78). At an unknown date, an open one room shed-roofed addition was added to the original building on its north side (Figs. 72, 79). A six-panel door opened on the east side from the main floor level of the shed addition, its use unknown. The original building had its roof ridge-oriented east to west. The roof of the shed addition faces north. The shed has a layer of sheathing on the inside of the vertical framing up to just under the roof rafters (Fig. 80). Hardware wire covers the inside of the shed windows. Part of the exterior red painted outside wall of the original building is exposed inside the shed (Fig. 81).



Fig. #85 Brook Farm Barn 3 Weathered Siding

Wooden sills are extremely deteriorated. On the barn yard level of the front of the building the sills on top of the retaining wall are significantly compromised causing settling of the front of the building (Figs. 82, 83). A tree pole added on top of the wall under the front of the building is rotted and broken (Fig. 84). Shiplap siding is heavily weathered especially at the base of the walls (Fig. 85).



Fig. #74 Brook Farm Barn 3 Support Piers

The original roof was constructed of irregularly shaped and spaced broad board sheathing topped by visible cedar shakes (Fig. 86). At some time, asphalt shingles were added over the shakes. Some roof rafters were reinforced to support the roof load. The roof was not maintained and the building suffered heavy leakage, severely damaging the roof structure (Fig. 87). It was covered at an unknown time with corrugated metal roofing.



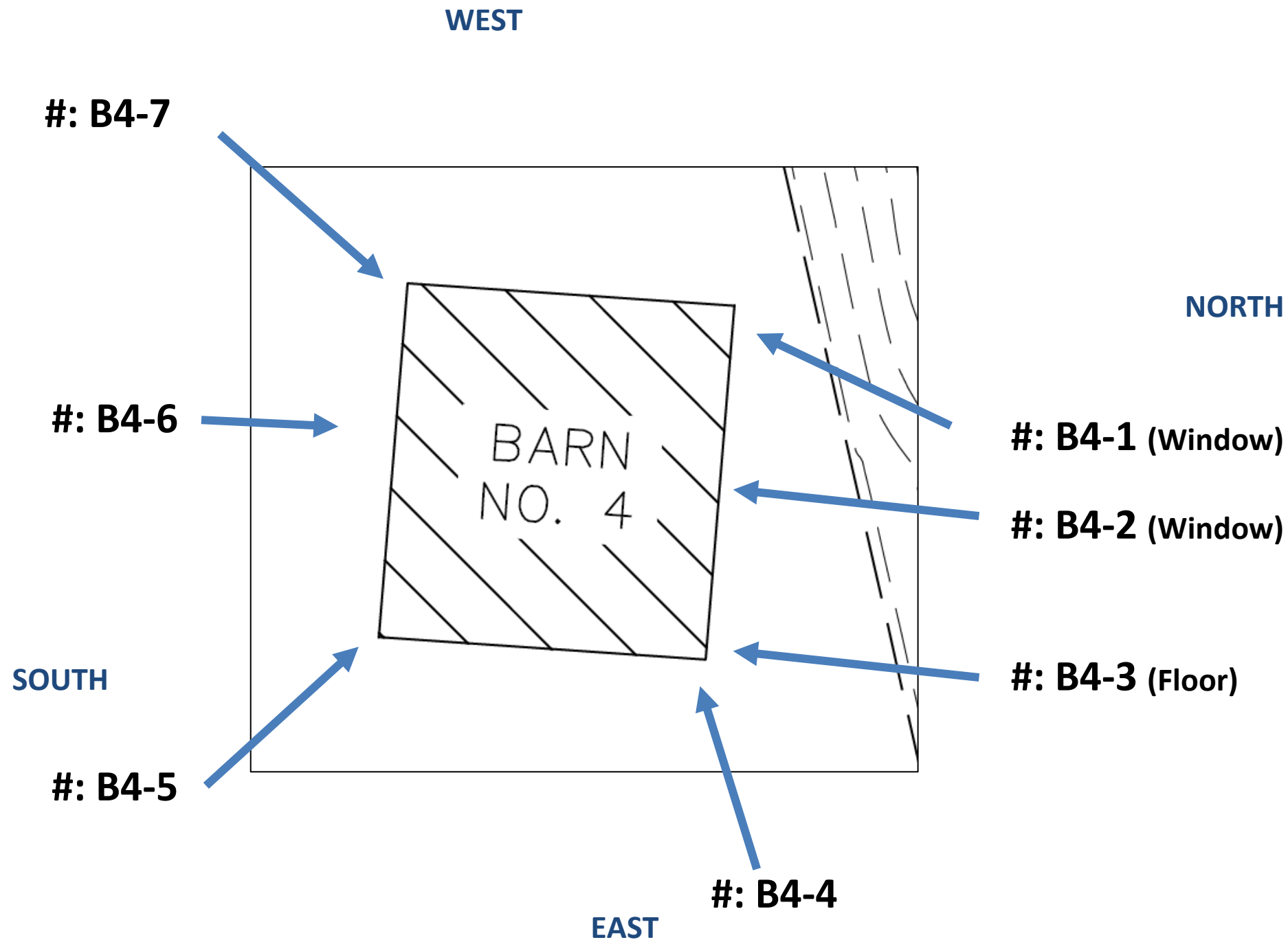
Fig. #86 Brook Farm Barn 3 Roof Cladding

BARN NO. 4

Mohonk Preserve – Brook Farm Historic Barns Photo Documentation (Sheet 6 of 6)

Existing Conditions – 06.09.2024

National Register of Historic Places (1973): The Lake Mohonk Mountain House Complex (NY State Office of Historic Preservation - Contributing features)



BARN 4 (Figs. 88, 89)



Fig. #88 Brook Farm Barn 4

This, the smallest barn building, is a non-contributing structure. Photographs taken during the August 3, 1935 barn fire reveal Barn 4 absent at that time (Fig. 6).

When constructed, it was framed with rough cut sawed lumber and built directly on the ground (Fig. 90). With no conventional foundation under the building, the wooden sills are seriously deteriorated and crumbling. The bottom of the wall uprights is also compromised leaving the barn settling into the ground and unsafe. A small wooden framed lean-to shed addition on the back of the building collapsed and its remains lay in a rotting mass (Fig. 91).

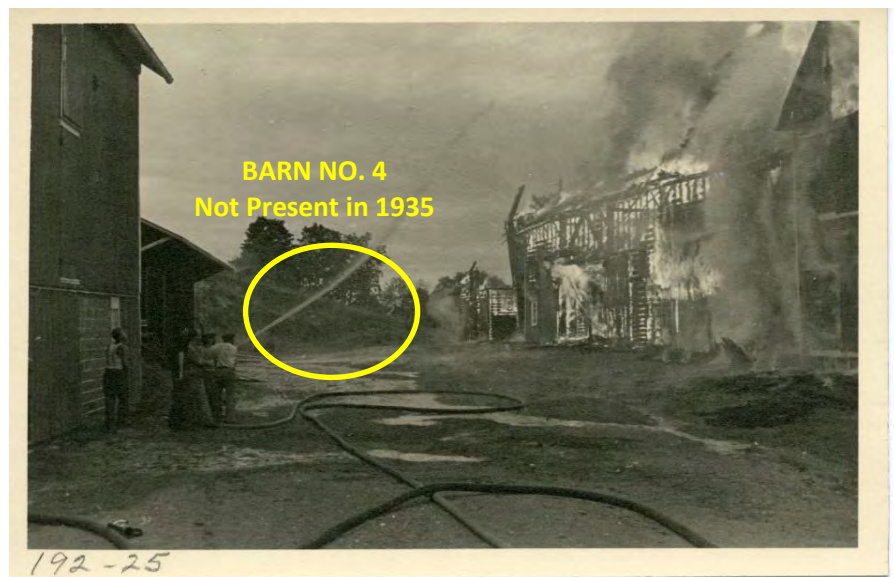


Fig. #6 Brook Farm Fire August 3, 1935

The roof ridge faces east to west, with a gable window centered under the peak of the roof front and back (Fig. 92). Top rolling front doors could be opened outward both ways on a rail which extended beyond the sides of the building. There are two windows in the north and south walls (Figs. 93 & 94). Inside there is a partial loft floor supported on joists from the top of the walls on either side with six additional supports extending up to the roof rafters, the loft area filling about half of the interior space.

The roof sheathing of this barn is more accurately cut lumber and is less stained and deteriorated from leaking. Outside overhanging roof sheathing show holes and moderate deterioration. The roofing is corrugated metal over two layers of asphalt shingles (Fig. 91).

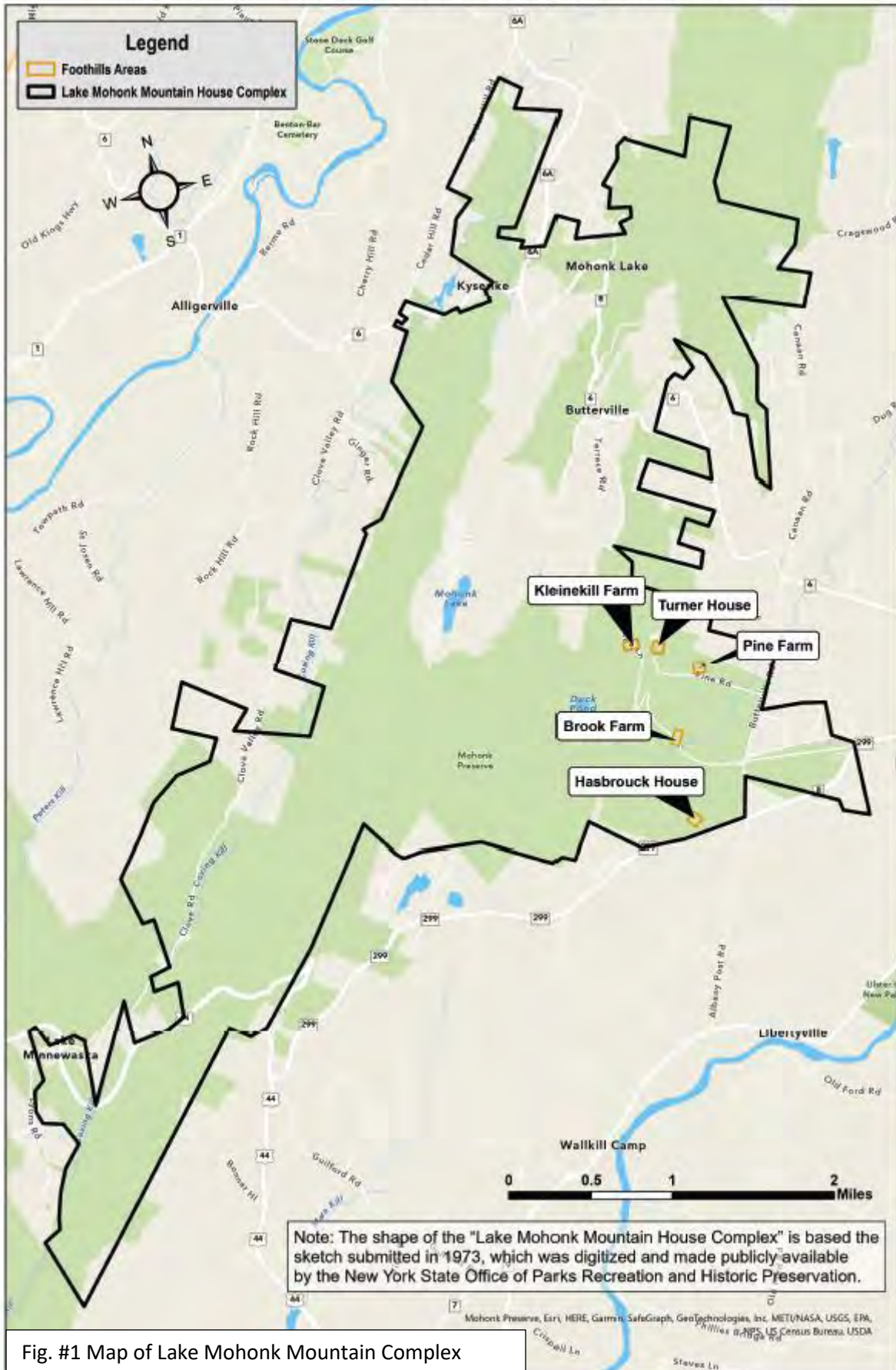
**Mohonk Preserve
Brook Farm Historic Barns Photo Documentation**

**Appendix A:
Photo Index Narrative**

Current Figure	New Filename / Description	Date Photographed
1	#1 Map of Lake Mohonk Mountain Complex	12/19/2022
2	#2 David H. Burr, map of Ulster County 1829	1829
3	#3 1892 east slope of the ridge	1892
4	#4 Brook Farm 1915 NYS Digital Archives	1915
5	#5 Brook Farm Fire August 3, 1935	8/3/1935
6	#6 Brook Farm Fire August 3, 1935	8/3/1935
7	#7 Brook Farm Fire August 3, 1935	8/3/1935
8	#8 Brook Farm Barn 1 hand-hewn timbering	6/08/2024
9	#9 Brook Farm Barn 1 hand-hewn timbering	6/08/2024
10	#10 Brook Farm Barn 1 built-in ladder	6/08/2024
11	#11 Brook Farm Barn 1 sawed lumber framing	6/08/2024
12	#12 Brook Farm Barn 1 built into slope	6/08/2024
13	#13 Brook Farm Barn 1 dry stack and concrete wall	6/08/2024
14	#14 Brook Farm Barn 1 decayed sill	6/08/2024
15	#15 Brook Farm Barn 1 knee-wall sawed wood framing	6/08/2024
16	#16 Brook Farm Barn 1 north foundation and cripple wall	6/08/2024
17	#17 Brook Farm Barn 1 horizontal window frames	6/08/2024
18	#18 Brook Farm Barn 1 wood joist and tree pole supports	6/08/2024
19	#19 Brook Farm Barn 1 sideways movement	6/08/2024
20	#20 Brook Farm Barn 1 rough stalls	6/08/2024
21	#21 Brook Farm Barn 1 main room	6/08/2024
22	#22 Brook Farm Barn 1 main room	6/08/2024
23	#23 Brook Farm Barn 1 major cracking	6/08/2024
24	#24 Brook Farm Barn 1 north bent frame	6/08/2024
25	#25 Brook Farm Barn 1 NY 1955 license plate	6/08/2024
26	#26 Brook Farm Barn 1 permanently closed door	6/08/2024
27	#27 Brook Farm Barn 1 hay carrier rail	6/28/2024
28	#28 Brook Farm Barn 1 hay carrier rail system	6/28/2024
29	#29 Brook Farm Barn 1 pulley mechanism	6/28/2024
30	#30 Brook Farm Barn 1 southeast corner post	6/08/2024
31	#31 Brook Farm Barn 1 count record	6/28/2024
32	#32 Brook Farm Barn 1 north wall suspended pulley	6/28/2024
33	#33 Brook Farm Barn 1 barnyard doors	6/08/2024
34	#34 Brook Farm Barn 1 six-pane window	6/08/2024
35	#35 Brook Farm Barn 1 double six-pane window	6/08/2024
36	#36 Brook Farm Barn 1 smaller door north side	6/08/2024
37	#37 Brook Farm Barn 1 tongue and groove boards	6/08/2024
38	#38 Brook Farm Barn 1 horizontal shiplap siding	6/08/2024
39	#39 Brook Farm Barn 1 missing siding	6/08/2024
40	#40 Brook Farm Barn 1 original upper bent beam	6/08/2024
41	#41 Brook Farm Barn 1 roof rafters	6/08/2024
42	#42 Brook Farm Barn 1 sheet metal roof	6/08/2024
43	#43 Outbuilding drive-in sheds	6/08/2024
44	#44 Outbuilding additional 4 bays	6/08/2024
45	#45 Outbuilding lumber shed	6/08/2024
46	#46 Outbuilding external shiplap siding	6/28/2024
47	#47 Outbuilding main shed framing	6/08/2024

Current Figure	New Filename / Description	Date Photographed
48	#48 Brook Farm Barn 2	4/26/2024
49	#49 Brook Farm Barn 2 from South	4/27/2024
50	#50 Brook Farm Barns 2 and 3 from West	4/26/2024
51	#51 Brook Farm Barn 2 Lower Level Stone Retaining Wall	5/8/2024
52	#52 Brook Farm Barn 2 Lower Level Stalls	5/8/2024
53	#53 Brook Farm Barn 2 Lower Level Door	5/8/2024
54	#54 Brook Farm Barn 2 Lower Level Door Top Roller	5/8/2024
55	#55 Brook Farm Barn 2 Lower Level Door Latch	5/8/2024
56	#56 Brook Farm Barn 2 Framing	5/8/2024
57	#57 Brook Farm Barn 2 Framing	5/8/2024
58	#58 Brook Farm Barn 2 Framing	4/27/2024
59	#59 Brook Farm Barn 2 Framing	5/8/2024
60	#60 Brook Farm Barn 2 Retaining Wall Failed Tree Pole Support	5/8/2024
61	#61 Brook Farm Barn 2 Failed Foundation Support Post	5/8/2024
62	#62 Brook Farm Barn 2 Supporting Hand Hewn Beam	4/27/2024
63	#63 Brook Farm Barn 2 Rough Sawed Floor Joist	4/25/2024
64	#64 Brook Farm Barn 2 North Corner Wire Caging	4/25/2024
65	#65 Brook Farm Barn 2 Front Doors	4/26/2024
66	#66 Brook Farm Barn 2 Weathered Sheathing	4/25/2024
67	#67 Brook Farm Barn 2 Six over Six Windows	4/25/2024
68	#68 Brook Farm Barn 2 East Corner Window	4/25/2024
69	#69 Brook Farm Barn 2 Roof Cladding	4/25/2024
70	#70 Brook Farm Barn 2 Roof Cladding	4/25/2024
71	#71 Brook Farm Barn 3	4/26/2024
72	#72 Brook Farm Barn 3 East Side	4/25/2024
73	#73 Brook Farm Barn 3 Collapsed Support Wall	4/25/2024
74	#74 Brook Farm Barn 3 Support Piers	4/25/2024
75	#75 Brook Farm Barn 3 Lower Level Tapered Openings	4/25/2024
76	#76 Brook Farm Barn 3 Mixed Framing	4/25/2024
77	#77 Brook Farm Barn 3 hand-hewn support timbers	4/25/2024
78	#78 Brook Farm Barn 3 hand-hewn support timbers	4/25/2024
79	#79 Brook Farm Barn 3 Addition	4/25/2024
80	#80 Brook Farm Barn 3 Inside Sheathing Double Wall	4/25/2024
81	#81 Brook Farm Barn 3 Red Painted Outside Wall	4/25/2024
82	#82 Brook Farm Barn 3 Compromised Front Sill	4/25/2024
83	#83 Brook Farm Barn 3 Compromised Front Sill	4/27/2024
84	#84 Brook Farm Barn 3 Rotted Tree Pole at Wall	4/25/2024
85	#85 Brook Farm Barn 3 Weathered Siding	2/18/2024
86	#86 Brook Farm Barn 3 Roof Cladding	4/25/2024
87	#87 Brook Farm Barn 3 Damage to Roof Structure	4/25/2024
88	#88 Brook Farm Barn 4	4/25/2024
89	#89 Brook Farm Barn Yard	2/18/2024
90	#90 Brook Farm Barn 4 built directly on ground	4/25/2024
91	#91 Brook Farm Barn 4 west side	4/25/2024
92	#92 Brook Farm Barn 4 southeast side	2/18/2024
93	#93 Brook Farm Barn 4 nine pane window	4/25/2024
94	#94 Brook Farm Barn 4 south side	4/25/2024

Lake Mohonk Mountain House Complex: Foothills Areas



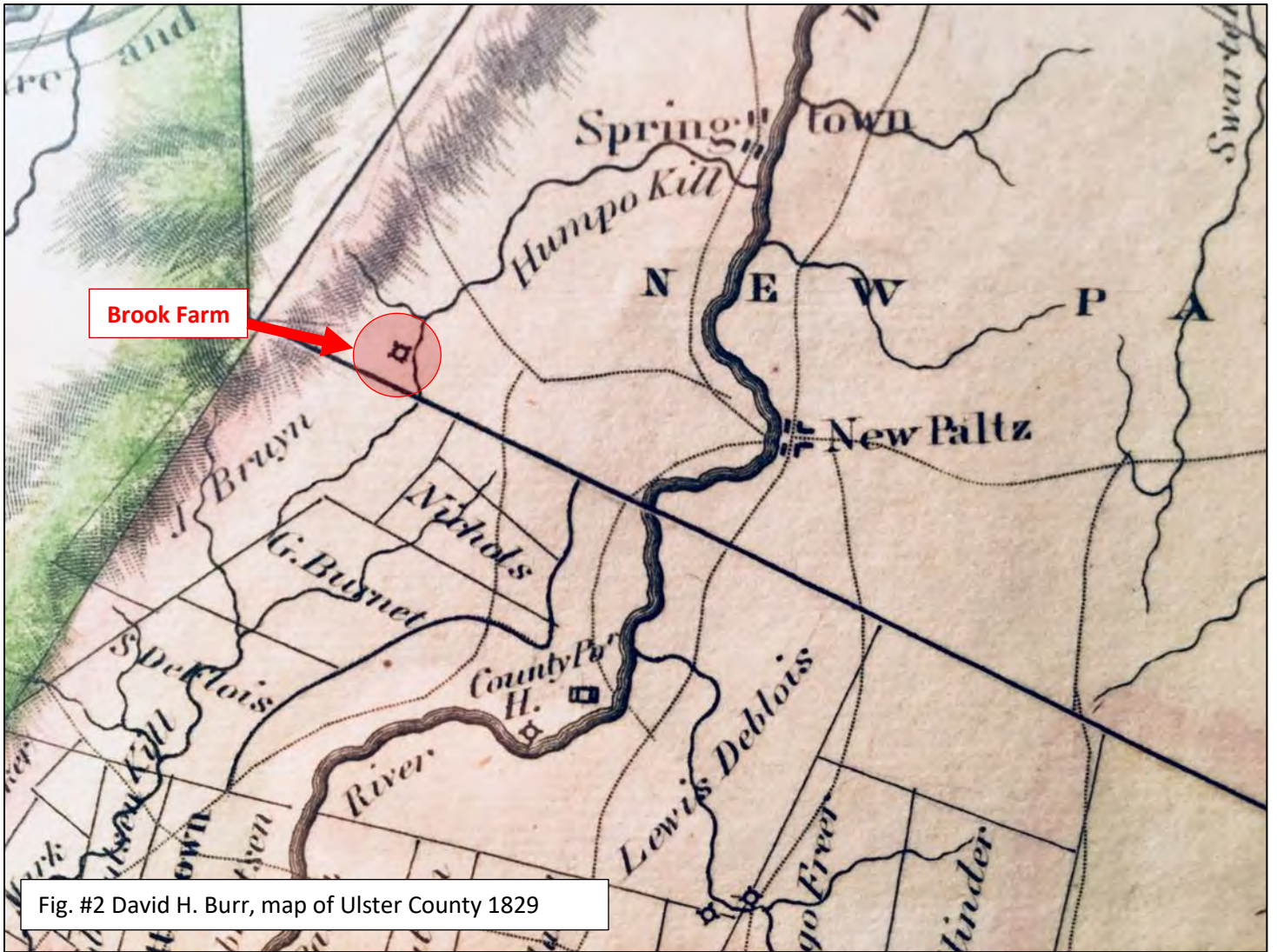


Fig. #2 David H. Burr, map of Ulster County 1829



Fig. #3 1892 east slope of the ridge

Fig. #4 Brook Farm 1915 NYS Archives

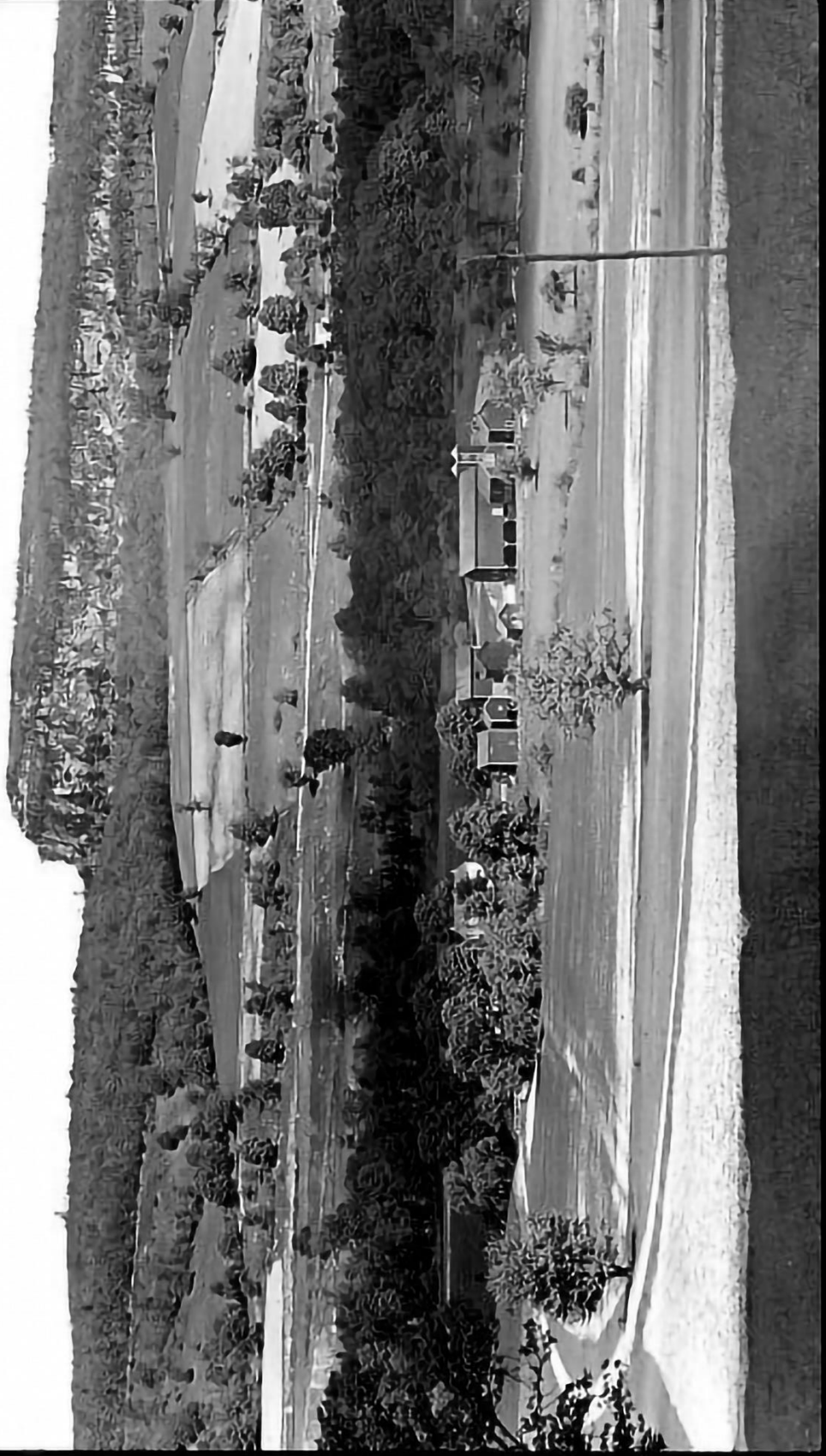




Fig. #5 Brook Farm Fire August 3, 1935

192-22



Fig. #6 Brook Farm Fire August 3, 1935

192-25



Fig. #7 Brook Farm Fire August 3, 1935

192-27



Fig. #8 Brook Farm Barn 1 hand-hewn timbering



Fig. #9 Brook Farm Barn 1 hand-hewn timbering



Fig. #10 Brook Farm Barn 1 built-in ladder



Fig. #11 Brook Farm Barn 1 sawed lumber framing





Fig. #14 Brook Farm Barn 1 decayed sill



Fig. #15 Brook Farm Barn 1 knee-wall sawed wood framing



Fig# 16 Brook Farm Barn 1 north foundation and cripple wall



Fig. #17 Brook Farm Barn 1 horizontal window frames



Fig. #18 Brook Farm Barn 1 wood joist and tree pole supports



Fig. #19 Brook Farm Barn 1 sideways movement



Fig. #20 Brook Farm Barn 1 rough stalls



Fig. #21 Brook Farm Barn 1 main room



Fig. #22 Brook Farm Barn 1 main room



Fig. #23 Brook Farm Barn 1 major cracking



Fig. #24 Brook Farm Barn 1 north bent frame



Fig. #25 Brook Farm Barn 1 NY 1955 license plate



Fig. #26 Brook Farm Barn 1 permanently closed door



Fig. #27 Brook Farm Barn 1 hay carrier rail



Fig. #28 Brook Farm Barn 1 hay carrier rail system



Fig. #29 Brook Farm Barn 1 pulley mechanism



Fig. #30 Brook Farm Barn 1 southeast corner post



Fig. #31 Brook Farm Barn 1 count



Fig. #32 Brook Farm Barn 1 north wall

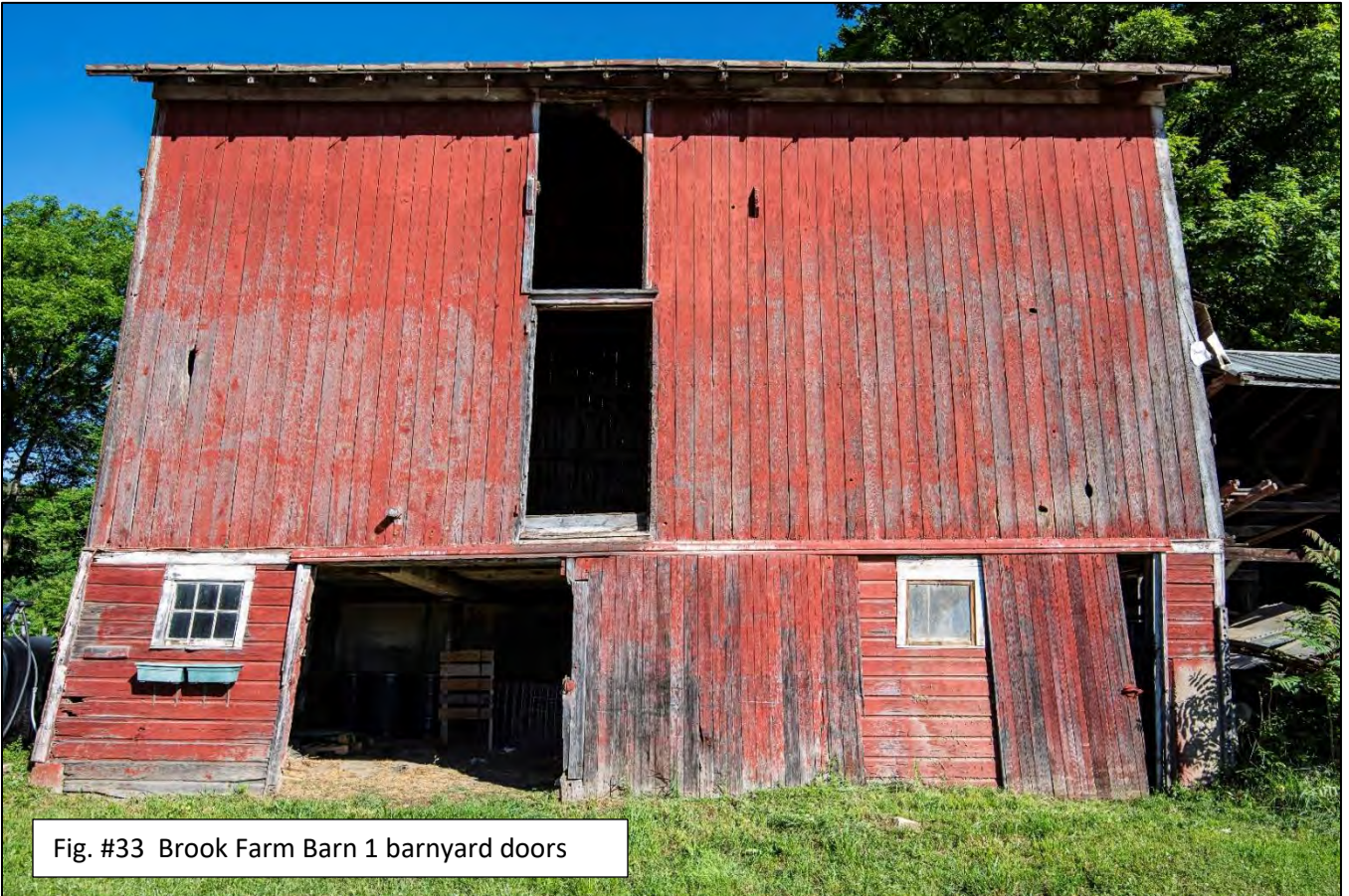


Fig. #33 Brook Farm Barn 1 barnyard doors



Fig. #34 Brook Farm Barn 1 six-pane window



Fig. #35 Brook Farm Barn 1 double six-pane



Fig. #36 Brook Farm Barn 1 smaller door north



Fig. #37 Brook Farm Barn 1 tongue and groove



Fig. #38 Brook Farm Barn 1 horizontal shiplap



Fig. #39 Brook Farm Barn 1 missing



Fig. #40 Brook Farm Barn 1 original upper bent



Fig. #41 Brook Farm Barn 1 roof rafters

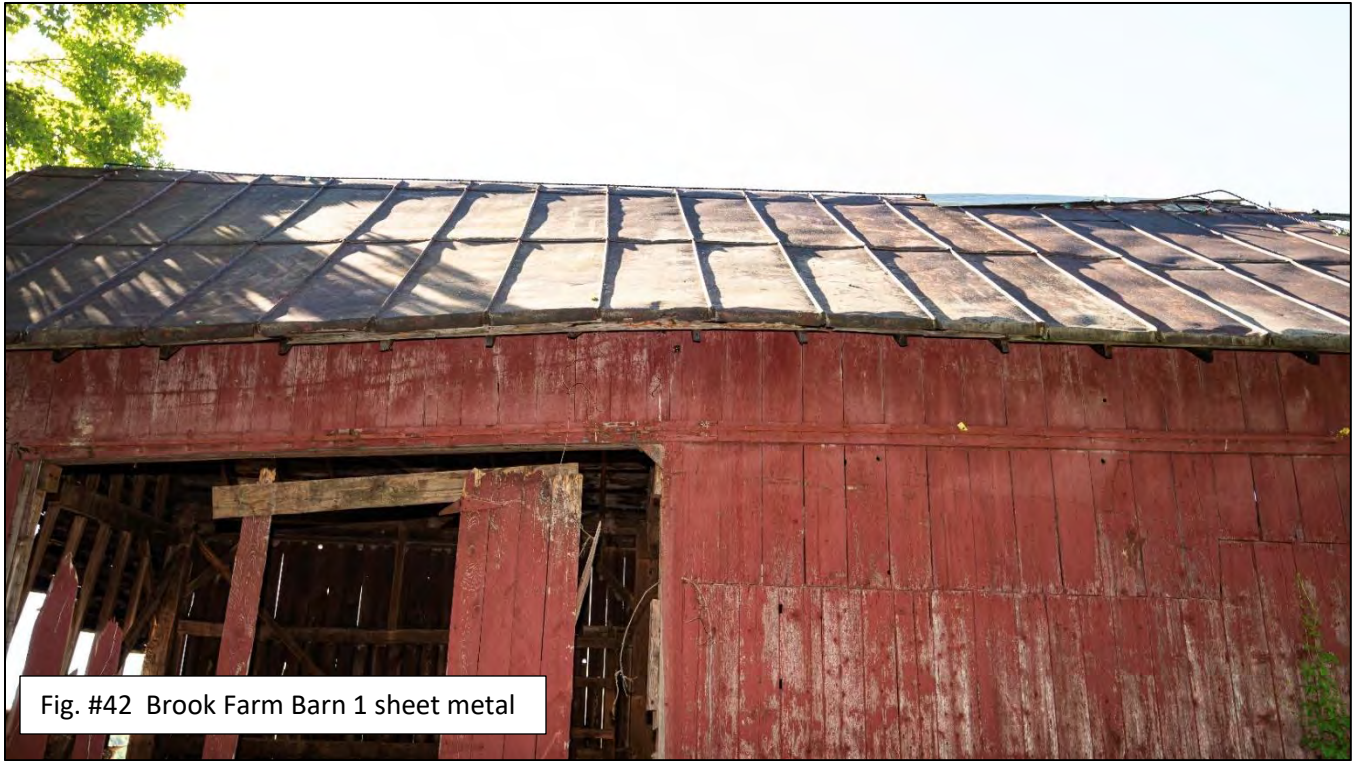


Fig. #42 Brook Farm Barn 1 sheet metal



Fig. #43 Outbuilding drive-in sheds





Fig. #46 Outbuilding external shiplap siding



Fig. #47 Outbuilding main shed framing



Fig. #48 Brook Farm Barn 2



Fig. #49 Brook Farm Barn 2 from South



Fig. #50 Brook Farm Barns 2 and 3 from West



Fig. #51 Brook Farm Barn 2 Lower Level Stone Retaining Wall



Fig. #52 Brook Farm Barn 2 Lower Level Stalls



Fig. #53 Brook Farm Barn 2 Lower Level Door

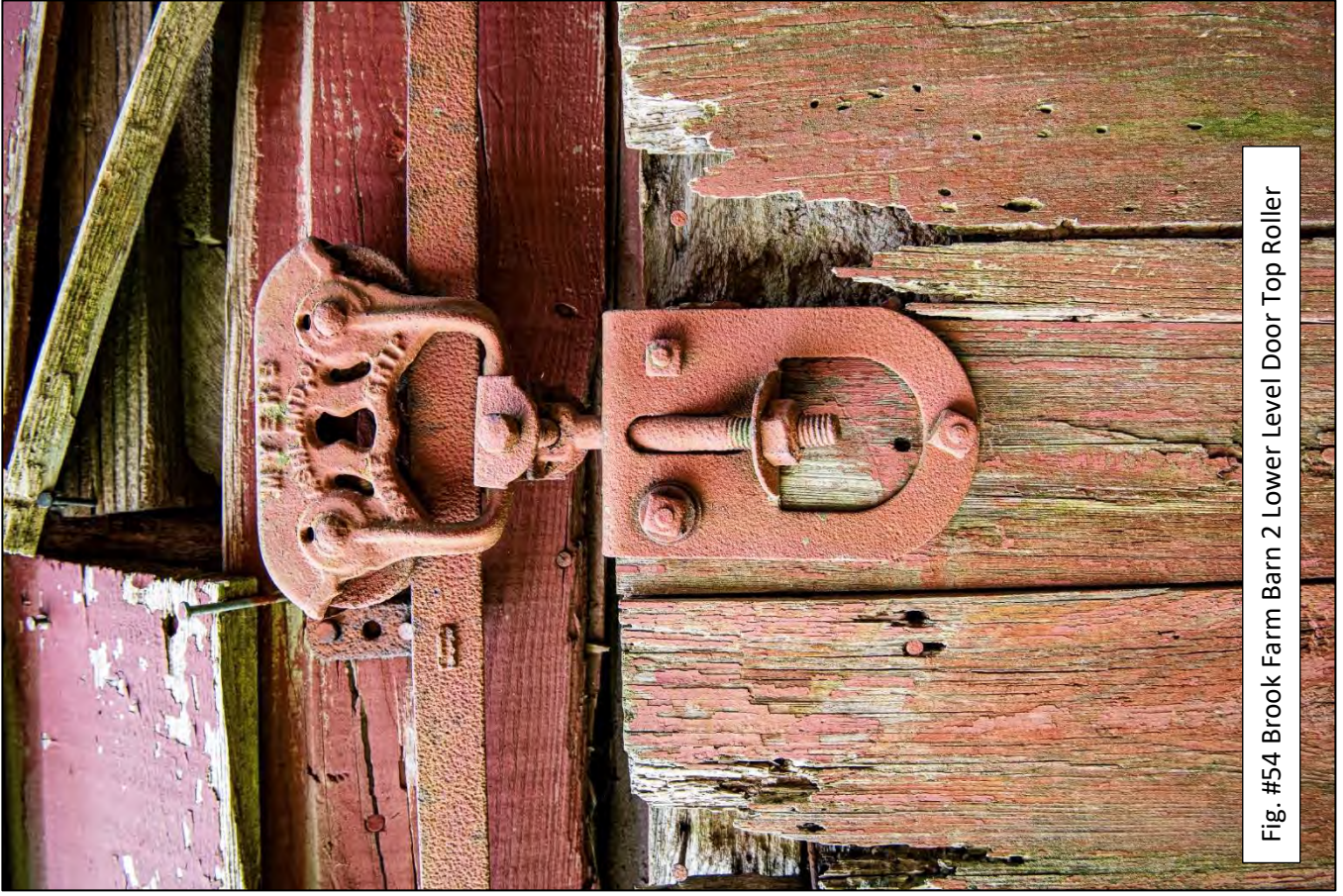


Fig. #54 Brook Farm Barn 2 Lower Level Door Top Roller



Fig. #55 Brook Farm Barn 2 Lower Level Door



Fig. #56 Brook Farm Barn 2 Framing



Fig. #57 Brook Farm Barn 2 Framing



Fig. #58 Brook Farm Barn 2 Framing



Fig. #59 Brook Farm Barn 2 Framing



Fig. #60 Brook Farm Barn 2 Retaining Wall Failed Tree Pole Support



Fig. #61 Brook Farm Barn 2 Failed Foundation Support Post



Fig. #62 Brook Farm Barn 2 Supporting Hand Hewn Beam



Fig# 63 Brook Farm Barn 2 Rough Sawn Floor Joist



Fig. #64 Brook Farm Barn 2 North Corner Wire Caging



Fig. #65 Brook Farm Barn 2 Front Doors



Fig. #66 Brook Farm Barn 2 Weathered Sheathing



Fig. #67 Brook Farm Barn 2 Six over Six Windows



Fig. #68 Brook Farm Barn 2 East Corner Window



Fig. #69 Brook Farm Barn 2 Roof Cladding



Fig. #70 Brook Farm Barn 2 Roof Cladding

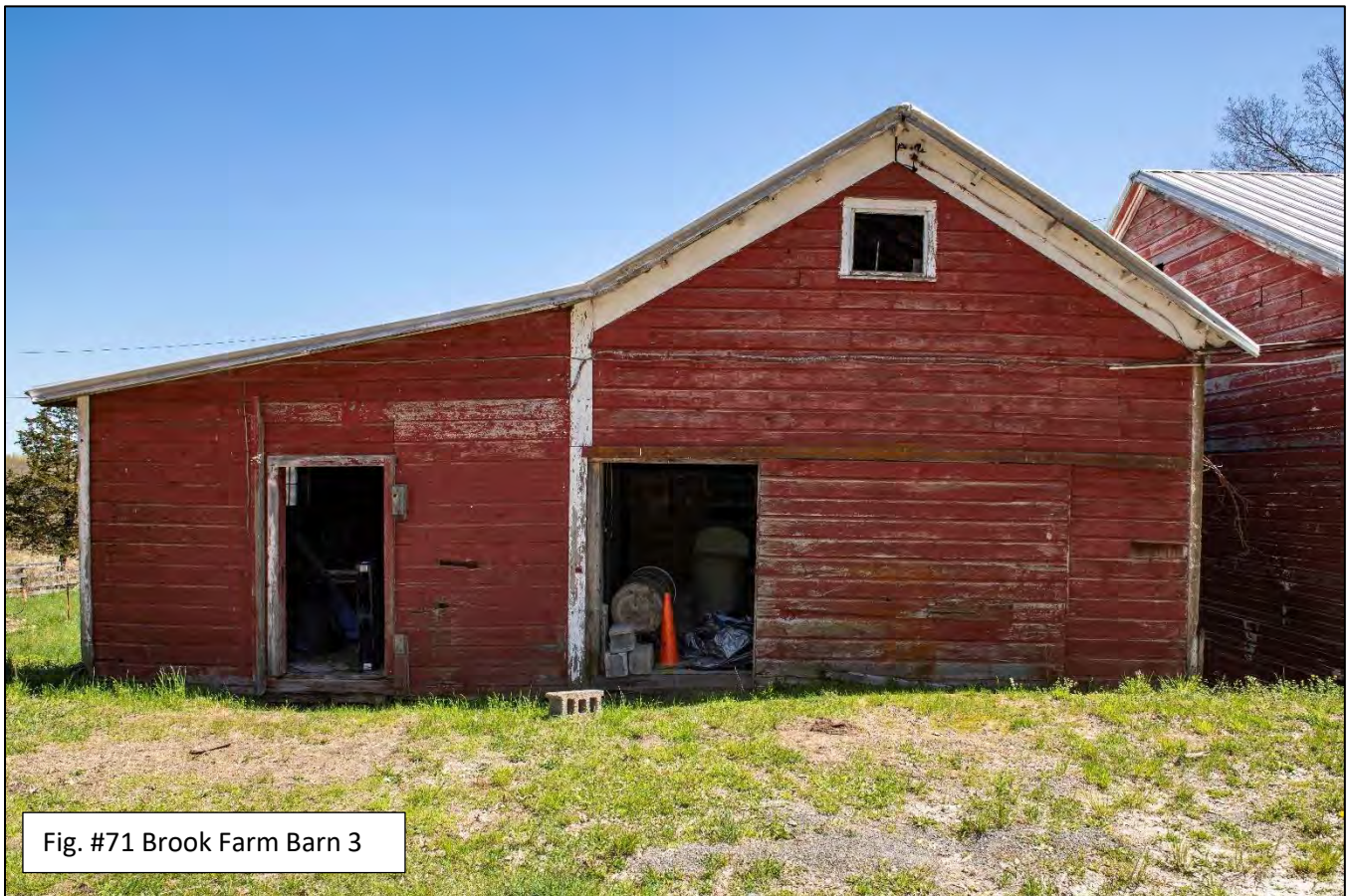


Fig. #71 Brook Farm Barn 3



Fig. #72 Brook Farm Barn 3 East Side



Fig. #73 Brook Farm Barn 3 Collapsed Support Wall



Fig. #74 Brook Farm Barn 3 Support Piers



Fig. #75 Brook Farm Barn 3 Lower Level Tapered Openings



Fig. #76 Brook Farm Barn 3 Mixed Framing



Fig. #77 Brook Farm Barn 3 hand-hewn support timbers



Fig. #78 Brook Farm Barn 3 hand-hewn support timbers



Fig. #79 Brook Farm Barn 3 Addition



Fig. #80 Brook Farm Barn 3 Inside Sheathing Double Wall



Fig. #81 Brook Farm Barn 3 Red Painted Outside Wall



Fig. #82 Brook Farm Barn 3 Compromised Front Sill



Fig. #83 Brook Farm Barn 3 Compromised Front Sill



Fig. #84 Brook Farm Barn 3 Rotted Tree Pole at Wall



Fig. #85 Brook Farm Barn 3 Weathered Siding



Fig. #86 Brook Farm Barn 3 Roof Cladding



Fig. #87 Brook Farm Barn 3 Damage to Roof Structure



Fig. #88 Brook Farm Barn 4



Fig. #89 Brook Farm Barn Yard



Fig. #90 Brook Farm Barn 4 built directly on ground



Fig. #91 Brook Farm Barn 4 west side



Fig. #92 Brook Farm Barn 4 southeast



Fig. #93 Brook Farm Barn 4 nine pane window



Fig. #94 Brook Farm Barn 4 south side

**Mohonk Preserve
Brook Farm Historic Barns Photo Documentation**

**Appendix B:
Photo Index Barn No1**

Photo #	Filename / Description	Date
B1-1	#B1-1 Brook Farm Barn 1 West Roof	6/8/2024
B1-2	#B1-2 Brook Farm Barn 1 West Roof	6/8/2024
B1-3	#B1-3 Brook Farm Barn 1 West	6/8/2024
B1-4	#B1-4 Brook Farm Barn 1 West	6/8/2024
B1-5	#B1-5 Brook Farm Barn 1 West	6/8/2024
B1-6	#B1-6 Brook Farm Barn 1 North	6/8/2024
B1-7	#B1-7 Brook Farm Barn 1 North Hay Carrier	2/18/2024
B1-8	#B1-8 Brook Farm Barn 1 Northeast	6/8/2024
B1-9	#B1-9 Brook Farm Barn 1 Northeast	6/8/2024
B1-10	#B1-10 Brook Farm Barn 1 Northeast Door	6/8/2024
B1-11	#B1-11 Brook Farm Barn 1 East	6/8/2024
B1-12	#B1-12 Brook Farm Barn 1 East	6/8/2024
B1-13	#B1-13 Brook Farm Barn 1 East	6/8/2024
B1-14	#B1-14 Brook Farm Barn 1 East Door	6/8/2024
B1-15	#B1-15 Brook Farm Barn 1 East Window	6/8/2024
B1-16	#B1-16 Brook Farm Barn 1 East Window	6/8/2024
B1-17	#B1-17 Brook Farm Barn 1 Southeast	2/18/2024
B1-18	#B1-18 Brook Farm Barn 1 Southeast	6/8/2024
B1-19	#B1-19 Brook Farm Barn 1 Southeast	6/8/2024
B1-20	#B1-20 Brook Farm Barn 1 South Window	6/8/2024
B1-21	#B1-21 Brook Farm Barn 1 South	6/8/2024
B1-22	#B1-22 Brook Farm Barn 1 South Roof Top	6/8/2024
B1-23	#B1-23 Brook Farm Barn 1 South Hay Carrier	6/8/2024
B1-24	#B1-24 Brook Farm Barn 1 Inside	6/8/2024
B1-25	#B1-25 Brook Farm Barn 1 Inside	6/8/2024
B1-26	#B1-26 Brook Farm Barn 1 Inside	6/8/2024
B1-27	#B1-27 Brook Farm Barn 1 Inside	6/8/2024
B1-28	#B1-28 Brook Farm Barn 1 Inside	6/8/2024
B1-29	#B1-29 Brook Farm Barn 1 Inside	6/8/2024
B1-30	#B1-30 Brook Farm Barn 1 Inside	6/8/2024
B1-31	#B1-31 Brook Farm Barn 1 Inside	6/8/2024
B1-32	#B1-32 Brook Farm Barn 1 Inside	6/8/2024
B1-33	#B1-33 Brook Farm Barn 1 Inside	6/8/2024
B1-34	#B1-34 Brook Farm Barn 1 Inside	6/8/2024
B1-35	#B1-35 Brook Farm Barn 1 Inside	6/8/2024
B1-36	#B1-36 Brook Farm Barn 1 Inside	6/8/2024
B1-37	#B1-37 Brook Farm Barn 1 Inside	6/8/2024
B1-38	#B1-38 Brook Farm Barn 1 Inside	6/8/2024
B1-39	#B1-39 Brook Farm Barn 1 Inside	6/8/2024
B1-40	#B1-40 Brook Farm Barn 1 Inside	6/8/2024
B1-41	#B1-41 Brook Farm Barn 1 Inside	6/8/2024
B1-42	#B1-42 Brook Farm Barn 1 Inside	6/8/2024
B1-43	#B1-43 Brook Farm Barn 1 Inside	6/8/2024
B1-44	#B1-44 Brook Farm Barn 1 Inside	6/8/2024
B1-45	#B1-45 Brook Farm Barn 1 Inside	6/8/2024
B1-46	#B1-46 Brook Farm Barn 1 Inside	6/8/2024
B1-47	#B1-47 Brook Farm Barn 1 Inside	6/8/2024
B1-48	#B1-48 Brook Farm Barn 1 Inside	6/8/2024
B1-49	#B1-49 Brook Farm Barn 1 Inside	6/8/2024
B1-50	#B1-50 Brook Farm Barn 1 Inside	6/8/2024

Photo #	Filename / Description	Date
B1-51	#B1-51 Brook Farm Barn 1 Inside	6/8/2024
B1-52	#B1-52 Brook Farm Barn 1 Inside	6/8/2024
B1-53	#B1-53 Brook Farm Barn 1 Inside	6/8/2024
B1-54	#B1-54 Brook Farm Barn 1 Inside	6/8/2024
B1-55	#B1-55 Brook Farm Barn 1 Inside	6/8/2024
B1-56	#B1-56 Brook Farm Barn 1 Inside	6/8/2024
B1-57	#B1-57 Brook Farm Barn 1 Inside	6/8/2024
B1-58	#B1-58 Brook Farm Barn 1 Inside	6/8/2024
B1-59	#B1-59 Brook Farm Barn 1 Inside	6/8/2024
B1-60	#B1-60 Brook Farm Barn 1 Inside	6/8/2024
B1-61	#B1-61 Brook Farm Barn 1 Inside	6/8/2024
B1-62	#B1-62 Brook Farm Barn 1 Inside	6/8/2024
B1-63	#B1-63 Brook Farm Barn 1 Inside	6/8/2024
B1-64	#B1-64 Brook Farm Barn 1 Inside	6/8/2024
B1-65	#B1-65 Brook Farm Barn 1 Inside	6/8/2024
B1-66	#B1-66 Brook Farm Barn 1 Inside	6/8/2024
B1-67	#B1-67 Brook Farm Barn 1 Inside	6/8/2024
B1-68	#B1-68 Brook Farm Barn 1 Inside	6/8/2024
B1-69	#B1-69 Brook Farm Barn 1 Inside	6/8/2024
B1-70	#B1-70 Brook Farm Barn 1 Inside	6/8/2024
B1-71	#B1-71 Brook Farm Barn 1 hardware	6/8/2024
B1-72	#B1-72 Brook Farm Barn 1 hardware	6/8/2024
B1-73	#B1-73 Brook Farm Barn 1 hardware	6/8/2024
B1-74	#B1-74 Brook Farm Barn 1 hardware	6/8/2024
B1-75	#B1-75 Brook Farm Barn 1 hardware	6/8/2024
B1-76	#B1-76 Brook Farm Barn 1 hardware	6/8/2024



#B1-1 Brook Farm Barn 1 West Roof, 60 Gatehouse Road, New Paltz, NY 12561, 6/8/2024, Ulster



#B1-2 Brook Farm Barn 1 West Roof, 60 Gatehouse Road, New Paltz, NY 12561, 6/8/2024, Ulster



#B1-3 Brook Farm Barn I West, 60 Gatehouse Road, New Paltz, NY 12561, 6/8/2024, Ulster



#B1-4 Brook Farm Barn I West, 60 Gatehouse Road, New Paltz, NY 12561, 6/8/2024, Ulster



#B1-5 Brook Farm Barn 1 West, 60 Gatehouse Road, New Paltz, NY 12561, 6/8/2024, Ulster



#B1-6 Brook Farm Barn 1 North, 60 Gatehouse Road, New Paltz, NY 12561, 6/8/2024, Ulster



#B1-8 Brook Farm Barn 1 Northeast, 60 Gatehouse Road, New Paltz, NY 12561, 6/8/2024, Ulster



#B1-7 Brook Farm Barn 1 North Hay Carrier, 60 Gatehouse Road, New Paltz, NY 12561, 2/18/2024, Ulster



#B1-9 Brook Farm Barn 1 Northeast, 60 Gatehouse Road, New Paltz, NY 12561, 6/8/2024, Ulster



#B1-10 Brook Farm Barn 1 Northeast Door, 60 Gatehouse Road, New Paltz, NY 12561, 6/8/2024, Ulster



#B1-11 Brook Farm Barn 1 East, 60 Gatehouse Road, New Paltz, NY 12561, 6/8/2024, Ulster



#B1-12 Brook Farm Barn 1 East, 60 Gatehouse Road, New Paltz, NY 12561, 6/8/2024, Ulster



#B1-13 Brook Farm Barn 1 East, 60 Gatehouse Road, New Paltz, NY 12561, 6/8/2024, Ulster



#B1-14 Brook Farm Barn 1 East Door, 60 Gatehouse Road, New Paltz, NY 12561, 6/8/2024, Ulster



#B1-15 Brook Farm Barn 1 East Window, 60 Gatehouse Road, New Paltz, NY 12561, 6/8/2024, Ulster



#B1-16 Brook Farm Barn 1 East Window, 60 Gatehouse Road, New Paltz, NY 12561, 6/8/2024, Ulster



#B1-17 Brook Farm Barn 1 Southeast, 60 Gatehouse Road, New Paltz, NY 12561, 2/18/2024, Ulster



#B1-18 Brook Farm Barn 1 Southeast, 60 Gatehouse Road, New Paltz, NY 12561, 6/8/2024, Ulster



#B1-19 Brook Farm Barn 1 Southeast, 60 Gatehouse Road, New Paltz, NY 12561, 6/8/2024, Ulster



#B1-20 Brook Farm Barn 1 South Window, 60 Gatehouse Road, New Paltz, NY 12561, 6/8/2024, Ulster



#B1-21 Brook Farm Barn 1 South, 60 Gatehouse Road, New Paltz, NY 12561, 6/8/2024, Ulster



#B1-22 Brook Farm Barn 1 South Roof Top, 60 Gatehouse Road, New Paltz, NY 12561, 6/8/2024, Ulster



#B1-23 Brook Farm Barn 1 South Hay Carrier, 60 Gatehouse Road, New Paltz, NY 12561, 6/8/2024, Ulster



#B1-24 Brook Farm Barn 1 Inside, 60 Gatehouse Road, New Paltz, NY 12561, 6/8/2024, Ulster



#B1-26 Brook Farm Barn 1 Inside, 60 Gatehouse Road, New Paltz, NY 12561, 6/8/2024, Ulster



#B1-25 Brook Farm Barn 1 Inside, 60 Gatehouse Road, New Paltz, NY 12561, 6/8/2024, Ulster



#B1-27 Brook Farm Barn 1 Inside, 60 Gatehouse Road, New Paltz, NY 12561, 6/8/2024, Ulster



#B1-28 Brook Farm Barn 1 Inside, 60 Gatehouse Road, New Paltz, NY 12561, 6/8/2024, Ulster



#B1-29 Brook Farm Barn 1 Inside, 60 Gatehouse Road, New Paltz, NY 12561, 6/8/2024, Ulster



#B1-30 Brook Farm Barn 1 Inside, 60 Gatehouse Road, New Paltz, NY 12561, 6/8/2024, Ulster



#B1-31 Brook Farm Barn 1 Inside, 60 Gatehouse Road, New Paltz, NY 12561, 6/8/2024, Ulster



#B1-32 Brook Farm Barn 1 Inside, 60 Gatehouse Road, New Paltz, NY 12561, 6/8/2024, Ulster



#B1-33 Brook Farm Barn 1 Inside, 60 Gatehouse Road, New Paltz, NY 12561, 6/8/2024, Ulster



#B1-34 Brook Farm Barn 1 Inside, 60 Gatehouse Road, New Paltz, NY 12561, 6/8/2024, Ulster



#B1-35 Brook Farm Barn 1 Inside, 60 Gatehouse Road, New Paltz, NY 12561, 6/8/2024, Ulster



#B1-36 Brook Farm Barn 1 Inside, 60 Gatehouse Road, New Paltz, NY 12561, 6/8/2024, Ulster



#B1-37 Brook Farm Barn 1 Inside, 60 Gatehouse Road, New Paltz, NY 12561, 6/8/2024, Ulster



#B1-38 Brook Farm Barn 1 Inside, 60 Gatehouse Road, New Paltz, NY 12561, 6/8/2024, Ulster



#B1-39 Brook Farm Barn 1 Inside, 60 Gatehouse Road, New Paltz, NY 12561, 6/8/2024, Ulster



#B1-40 Brook Farm Barn 1 Inside, 60 Gatehouse Road, New Paltz, NY 12561, 6/8/2024, Ulster



#B1-41 Brook Farm Barn 1 Inside, 60 Gatehouse Road, New Paltz, NY 12561, 6/8/2024, Ulster



#B1-42 Brook Farm Barn 1 Inside, 60 Gatehouse Road, New Paltz, NY 12561, 6/8/2024, Ulster



#B1-43 Brook Farm Barn 1 Inside, 60 Gatehouse Road, New Paltz, NY 12561, 6/8/2024, Ulster



#B1-44 Brook Farm Barn 1 Inside, 60 Gatehouse Road, New Paltz, NY 12561, 6/8/2024, Ulster



#B1-46 Brook Farm Barn 1 Inside, 60 Gatehouse Road, New Paltz, NY 12561, 6/8/2024, Ulster



#B1-45 Brook Farm Barn 1 Inside, 60 Gatehouse Road, New Paltz, NY 12561, 6/8/2024, Ulster



#B1-47 Brook Farm Barn 1 Inside, 60 Gatehouse Road, New Paltz, NY 12561, 6/8/2024, Ulster



#B1-48 Brook Farm Barn 1 Inside, 60 Gatehouse Road, New Paltz, NY 12561, 6/8/2024, Ulster



#B1-49 Brook Farm Barn 1 Inside, 60 Gatehouse Road, New Paltz, NY 12561, 6/8/2024, Ulster



#B1-50 Brook Farm Barn 1 Inside, 60 Gatehouse Road, New Paltz, NY 12561, 6/8/2024, Ulster



#B1-51 Brook Farm Barn 1 Inside, 60 Gatehouse Road, New Paltz, NY 12561, 6/8/2024, Ulster



#B1-52 Brook Farm Barn 1 Inside, 60 Gatehouse Road, New Paltz, NY 12561, 6/8/2024, Ulster



#B1-53 Brook Farm Barn 1 Inside, 60 Gatehouse Road, New Paltz, NY 12561, 6/8/2024, Ulster



#B1-54 Brook Farm Barn 1 Inside, 60 Gatehouse Road, New Paltz, NY 12561, 6/8/2024, Ulster



#B1-55 Brook Farm Barn 1 Inside, 60 Gatehouse Road, New Paltz, NY 12561, 6/8/2024, Ulster



#B1-56 Brook Farm Barn 1 Inside, 60 Gatehouse Road, New Paltz, NY 12561, 6/8/2024, Ulster



#B1-57 Brook Farm Barn 1 Inside, 60 Gatehouse Road, New Paltz, NY 12561, 6/8/2024, Ulster



#B1-58 Brook Farm Barn 1 Inside, 60 Gatehouse Road, New Paltz, NY 12561, 6/8/2024, Ulster



#B1-59 Brook Farm Barn 1 Inside, 60 Gatehouse Road, New Paltz, NY 12561, 6/8/2024, Ulster



#B1-60 Brook Farm Barn 1 Inside, 60 Gatehouse Road, New Paltz, NY 12561, 6/8/2024, Ulster



#B1-61 Brook Farm Barn 1 Inside, 60 Gatehouse Road, New Paltz, NY 12561, 6/8/2024, Ulster



#B1-62 Brook Farm Barn 1 Inside, 60 Gatehouse Road, New Paltz, NY 12561, 6/8/2024, Ulster



#B1-63 Brook Farm Barn 1 Inside, 60 Gatehouse Road, New Paltz, NY 12561, 6/8/2024, Ulster



#B1-64 Brook Farm Barn 1 Inside, 60 Gatehouse Road, New Paltz, NY 12561, 6/8/2024, Ulster



#B1-65 Brook Farm Barn 1 Inside, 60 Gatehouse Road, New Paltz, NY 12561, 6/8/2024, Ulster



#B1-66 Brook Farm Barn 1 Inside, 60 Gatehouse Road, New Paltz, NY 12561, 6/8/2024, Ulster



#B1-67 Brook Farm Barn 1 Inside, 60 Gatehouse Road, New Paltz, NY 12561, 6/8/2024, Ulster



#B1-68 Brook Farm Barn 1 Inside, 60 Gatehouse Road, New Paltz, NY 12561, 6/8/2024, Ulster



#B1-69 Brook Farm Barn 1 Inside, 60 Gatehouse Road, New Paltz, NY 12561, 6/8/2024, Ulster



#B1-70 Brook Farm Barn 1 Inside, 60 Gatehouse Road, New Paltz, NY 12561, 6/8/2024, Ulster



#B1-71 Brook Farm Barn 1 hardware, 60 Gatehouse Road, New Paltz, NY 12561, 6/8/2024, Ulster



#B1-72 Brook Farm Barn 1 hardware, 60 Gatehouse Road, New Paltz, NY 12561, 6/8/2024, Ulster



#B1-73 Brook Farm Barn I hardware, 60 Gatehouse Road, New Paltz, NY 12561, 6/8/2024, Ulster



#B1-74 Brook Farm Barn I hardware, 60 Gatehouse Road, New Paltz, NY 12561, 6/8/2024, Ulster



#B1-76 Brook Farm Barn 1 hardware, 60 Gatehouse Road, New Paltz, NY 12561, 6/8/2024, Ulster #B1-75 Brook Farm Barn 1 hardware, 60 Gatehouse Road, New Paltz, NY 12561, 6/8/2024, Ulster

**Mohonk Preserve
Brook Farm Historic Barns Photo Documentation**

**Appendix C:
Photo Index Outbuilding No1**

Photo	Filename / Description	Date
OB-1	#OB-1 Brook Farm Outbuilding 1 Southeast	2/18/2024
OB-2	#OB-2 Brook Farm Outbuilding 1 East	6/8/2024
OB-3	#OB-3 Brook Farm Outbuilding 1 East	6/8/2024
OB-4	#OB-4 Brook Farm Outbuilding 1 Southeast	6/8/2024
OB-5	#OB-5 Brook Farm Outbuilding 1 Southeast	6/8/2024
OB-6	#OB-6 Brook Farm Outbuilding 1 Southeast	2/18/2024
OB-7	#OB-7 Brook Farm Outbuilding 1 Inside	6/8/2024
OB-8	#OB-8 Brook Farm Outbuilding 1 Inside	6/8/2024
OB-9	#OB-9 Brook Farm Outbuilding 1 Inside	6/8/2024
OB-10	#OB-10 Brook Farm Outbuilding 1 Inside	6/8/2024
OB-11	#OB-11 Brook Farm Outbuilding 1 Inside	6/8/2024



#OB-1 Brook Farm Outbuilding 1 Southeast, 60 Gatehouse Road, New Paltz, NY 12561, 2/18/2024, Ulster



#OB-2 Brook Farm Outbuilding 1 East, 60 Gatehouse Road, New Paltz, NY 12561, 6/8/2024, Ulster



#OB-3 Brook Farm Outbuilding 1 East, 60 Gatehouse Road, New Paltz, NY 12561, 6/8/2024, Ulster



#OB-4 Brook Farm Outbuilding 1 Southeast, 60 Gatehouse Road, New Paltz, NY 12561, 6/8/2024, Ulster



#OB-5 Brook Farm Outbuilding 1 Southeast, 60 Gatehouse Road, New Paltz, NY 12561, 6/8/2024, Ulster



#OB-6 Brook Farm Outbuilding 1 Southeast, 60 Gatehouse Road, New Paltz, NY 12561, 2/18/2024, Ulster



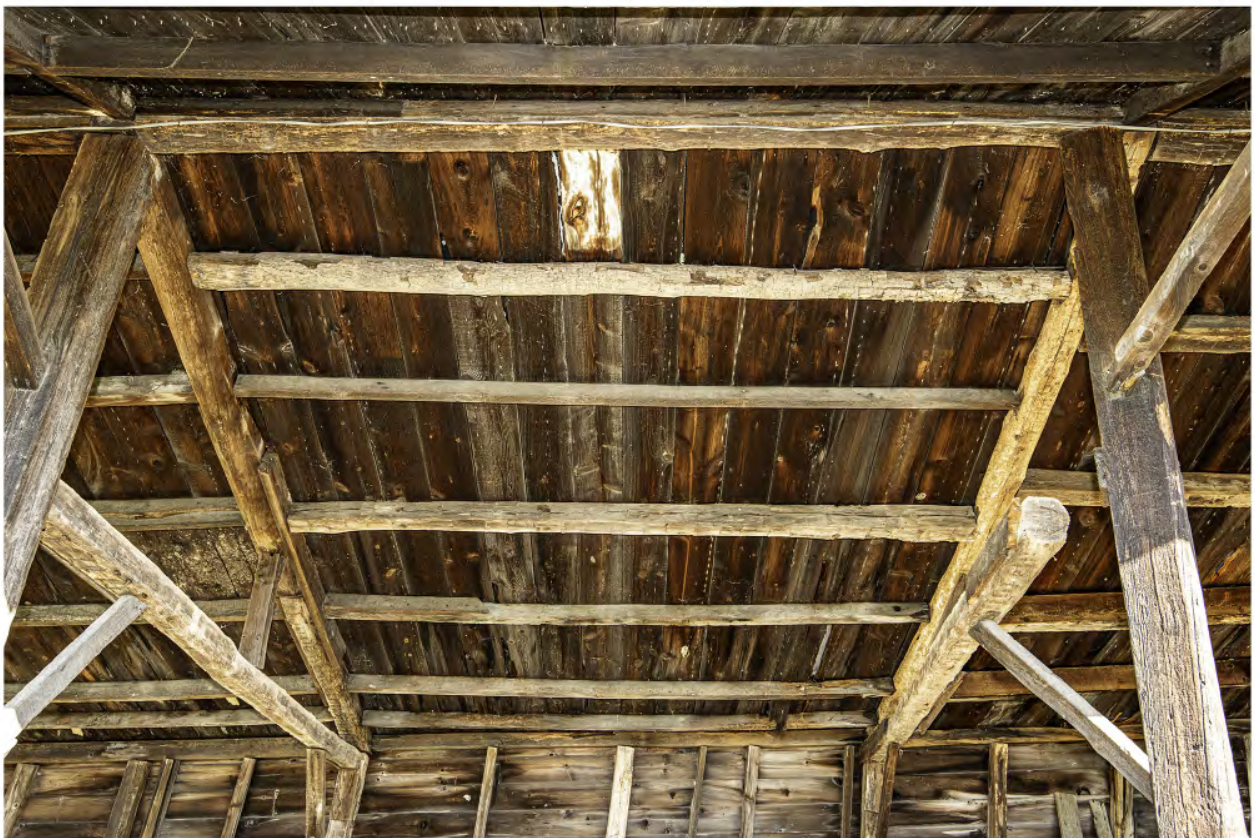
#OB-7 Brook Farm Outbuilding 1 Inside, 60 Gatehouse Road, New Paltz, NY 12561, 6/8/2024, Ulster



#OB-8 Brook Farm Outbuilding 1 Inside, 60 Gatehouse Road, New Paltz, NY 12561, 6/8/2024, Ulster



#OB-9 Brook Farm Outbuilding 1 Inside, 60 Gatehouse Road, New Paltz, NY 12561, 6/8/2024, Ulster



#OB-10 Brook Farm Outbuilding 1 Inside, 60 Gatehouse Road, New Paltz, NY 12561, 6/8/2024, Ulster



#OB-11 Brook Farm Outbuilding 1 Inside, 60 Gatehouse Road, New Paltz, NY 12561, 6/8/2024, Ulster

**Mohonk Preserve
Brook Farm Historic Barns Photo Documentation**

**Appendix D:
Photo Index Barn No2**

Photo #	Filename / Description	Date
B2-1	#B2-1 Brook Farm Barn 2 West	4/26/2024
B2-2	#B2-2 Brook Farm Barn 2 Northeast Lower Level	5/8/2024
B2-3	#B2-3 Brook Farm Barn 2 North	5/8/2024
B2-4	#B2-4 Brook Farm Barn 2 North	5/8/2024
B2-5	#B2-5 Brook Farm Barn 2 North Lower Level	5/8/2024
B2-6	#B2-6 Brook Farm Barn 2 North Lower Level	5/8/2024
B2-7	#B2-7 Brook Farm Barn 2 North Lower Level	4/25/2024
B2-8	#B2-8 Brook Farm Barn 2 North Lower Level	5/8/2024
B2-9	#B2-9 Brook Farm Barn 2 Northeast	4/25/2024
B2-10	#B2-10 Brook Farm Barn 2 Northeast	4/25/2024
B2-11	#B2-11 Brook Farm Barn 2 Northeast	4/25/2024
B2-12	#B2-12 Brook Farm Barn 2 East	4/25/2024
B2-13	#B2-13 Brook Farm Barn 2 Southeast	4/25/2024
B2-14	#B2-14 Brook Farm Barn 2 Southeast	4/25/2024
B2-15	#B2-15 Brook Farm Barn 2 Southeast	4/25/2024
B2-16	#B2-16 Brook Farm Barn 2 South	4/25/2024
B2-17	#B2-17 Brook Farm Barn 2 Southwest	4/25/2024
B2-18	#B2-18 Brook Farm Barn 2 Southwest	4/25/2024
B2-19	#B2-19 Brook Farm Barn 2 Inside	4/25/2024
B2-20	#B2-20 Brook Farm Barn 2 Inside	4/25/2024
B2-21	#B2-21 Brook Farm Barn 2 Inside	4/25/2024
B2-22	#B2-22 Brook Farm Barn 2 Inside	4/25/2024
B2-23	#B2-23 Brook Farm Barn 2 Inside	4/25/2024
B2-24	#B2-24 Brook Farm Barn 2 Inside	4/25/2024
B2-25	#B2-25 Brook Farm Barn 2 Inside	4/25/2024
B2-26	#B2-26 Brook Farm Barn 2 Inside	4/25/2024
B2-27	#B2-27 Brook Farm Barn 2 Inside	4/25/2024
B2-28	#B2-28 Brook Farm Barn 2 Inside	4/25/2024
B2-29	#B2-29 Brook Farm Barn 2 Inside	4/25/2024
B2-30	#B2-30 Brook Farm Barn 2 Inside	4/25/2024
B2-31	#B2-31 Brook Farm Barn 2 Inside	4/25/2024
B2-32	#B2-32 Brook Farm Barn 2 Inside	4/25/2024
B2-33	#B2-33 Brook Farm Barn 2 Inside	4/25/2024
B2-34	#B2-34 Brook Farm Barn 2 Inside	4/25/2024
B2-35	#B2-35 Brook Farm Barn 2 Inside	4/25/2024



#B2-16 Brook Farm Barn 2 South, 60 Gatehouse Road, New Paltz, NY 12561, 4/25/2024, Ulster



#B2-17 Brook Farm Barn 2 Southwest, 60 Gatehouse Road, New Paltz, NY 12561, 4/25/2024, Ulster



#B2-18 Brook Farm Barn 2 Southwest, 60 Gatehouse Road, New Paltz, NY 12561, 4/25/2024, Ulster



#B2-19 Brook Farm Barn 2 Inside, 60 Gatehouse Road, New Paltz, NY 12561, 4/25/2024, Ulster



#B2-20 Brook Farm Barn 2 Inside, 60 Gatehouse Road, New Paltz, NY 12561, 4/25/2024, Ulster



#B2-21 Brook Farm Barn 2 Inside, 60 Gatehouse Road, New Paltz, NY 12561, 4/25/2024, Ulster



#B2-22 Brook Farm Barn 2 Inside, 60 Gatehouse Road, New Paltz, NY 12561, 4/25/2024, Ulster



#B2-23 Brook Farm Barn 2 Inside, 60 Gatehouse Road, New Paltz, NY 12561, 4/25/2024, Ulster



#B2-24 Brook Farm Barn 2 Inside, 60 Gatehouse Road, New Paltz, NY 12561, 4/25/2024, Ulster



#B2-25 Brook Farm Barn 2 Inside, 60 Gatehouse Road, New Paltz, NY 12561, 4/25/2024, Ulster



#B2-26 Brook Farm Barn 2 Inside, 60 Gatehouse Road, New Paltz, NY 12561, 4/25/2024, Ulster



#B2-27 Brook Farm Barn 2 Inside, 60 Gatehouse Road, New Paltz, NY 12561, 4/25/2024, Ulster



#B2-28 Brook Farm Barn 2 Inside, 60 Gatehouse Road, New Paltz, NY 12561, 4/25/2024, Ulster



#B2-29 Brook Farm Barn 2 Inside, 60 Gatehouse Road, New Paltz, NY 12561, 4/25/2024, Ulster



#B2-30 Brook Farm Barn 2 Inside, 60 Gatehouse Road, New Paltz, NY 12561, 4/25/2024, Ulster



#B2-31 Brook Farm Barn 2 Inside, 60 Gatehouse Road, New Paltz, NY 12561, 4/25/2024, Ulster



#B2-32 Brook Farm Barn 2 Inside, 60 Gatehouse Road, New Paltz, NY 12561, 4/25/2024, Ulster



#B2-33 Brook Farm Barn 2 Inside, 60 Gatehouse Road, New Paltz, NY 12561, 4/25/2024, Ulster



#B2-34 Brook Farm Barn 2 Inside, 60 Gatehouse Road, New Paltz, NY 12561, 4/25/2024, Ulster



#B2-35 Brook Farm Barn 2 Inside, 60 Gatehouse Road, New Paltz, NY 12561, 4/25/2024, Ulster



#B2-1 Brook Farm Barn 2 West, 60 Gatehouse Road, New Paltz, NY 12561, 4/26/2024, Ulster



#B2-2 Brook Farm Barn 2 Northeast Lower Level, 60 Gatehouse Road, New Paltz, NY 12561, 5/8/2024, Ulster



#B2-3 Brook Farm Barn 2 North, 60 Gatehouse Road, New Paltz, NY 12561, 5/8/2024, Ulster



#B2-4 Brook Farm Barn 2 North, 60 Gatehouse Road, New Paltz, NY 12561, 5/8/2024, Ulster



#B2-5 Brook Farm Barn 2 North Lower Level, 60 Gatehouse Road, New Paltz, NY 12561, 5/8/2024, Ulster



#B2-6 Brook Farm Barn 2 North Lower Level, 60 Gatehouse Road, New Paltz, NY 12561, 5/8/2024, Ulster



#B2-7 Brook Farm Barn 2 North Lower Level, 60 Gatehouse Road, New Paltz, NY 12561, 4/25/2024, Ulster



#B2-8 Brook Farm Barn 2 North Lower Level, 60 Gatehouse Road, New Paltz, NY 12561, 5/8/2024, Ulster



#B2-9 Brook Farm Barn 2 Northeast, 60 Gatehouse Road, New Paltz, NY 12561, 4/25/2024, Ulster



#B2-10 Brook Farm Barn 2 Northeast, 60 Gatehouse Road, New Paltz, NY 12561, 4/25/2024, Ulster



#B2-11 Brook Farm Barn 2 Northeast, 60 Gatehouse Road, New Paltz, NY 12561, 4/25/2024, Ulster



#B2-12 Brook Farm Barn 2 East, 60 Gatehouse Road, New Paltz, NY 12561, 4/25/2024, Ulster



#B2-14 Brook Farm Barn 2 Southeast, 60 Gatehouse Road, New Paltz, NY 12561, 4/25/2024, Ulster



#B2-13 Brook Farm Barn 2 Southeast, 60 Gatehouse Road, New Paltz, NY 12561, 4/25/2024, Ulster



#B2-15 Brook Farm Barn 2 Southeast, 60 Gatehouse Road, New Paltz, NY 12561, 4/25/2024, Ulster

**Mohonk Preserve
Brook Farm Historic Barns Photo Documentation**

**Appendix E:
Photo Index Barn No3**

Photo	Filename / Description	Date
B3-1	#B3-1 Brook Farm Barn 3 West	4/26/2024
B3-2	#B3-2 Brook Farm Barn 3 West Threshold	4/25/2024
B3-3	#B3-3 Brook Farm Barn 3 West Threshold	4/25/2024
B3-4	#B3-4 Brook Farm Barn 3 West Threshold	4/25/2024
B3-5	#B3-5 Brook Farm Barn 3 Northwest underneath	4/25/2024
B3-6	#B3-6 Brook Farm Barn 3 North	4/25/2024
B3-7	#B3-7 Brook Farm Barn 3 North	4/25/2024
B3-8	#B3-8 Brook Farm Barn 3 Northeast underneath	4/25/2024
B3-9	#B3-9 Brook Farm Barn 3 Northeast	4/25/2024
B3-10	#B3-10 Brook Farm Barn 3 Northeast	4/25/2024
B3-11	#B3-11 Brook Farm Barn 3 Northeast underneath	4/25/2024
B3-12	#B3-12 Brook Farm Barn 3 East Underneath	4/25/2024
B3-13	#B3-13 Brook Farm Barn 3 East Underneath	4/25/2024
B3-14	#B3-14 Brook Farm Barn 3 East Underneath	4/25/2024
B3-15	#B3-15 Brook Farm Barn 3 East Underneath	4/25/2024
B3-16	#B3-16 Brook Farm Barn 3 East Underneath	4/25/2024
B3-17	#B3-17 Brook Farm Barn 3 East Underneath	4/25/2024
B3-18	#B3-18 Brook Farm Barn 3 East	4/25/2024
B3-19	#B3-19 Brook Farm Barn 3 Southeast	4/25/2024
B3-20	#B3-20 Brook Farm Barn 3 Southeast	4/25/2024
B3-21	#B3-21 Brook Farm Barn 3 Inside	4/25/2024
B3-22	#B3-22 Brook Farm Barn 3 Inside	4/25/2024
B3-23	#B3-23 Brook Farm Barn 3 Inside	4/25/2024
B3-24	#B3-24 Brook Farm Barn 3 Inside	4/25/2024
B3-25	#B3-25 Brook Farm Barn 3 Inside	4/25/2024
B3-26	#B3-26 Brook Farm Barn 3 Inside	4/25/2024
B3-27	#B3-27 Brook Farm Barn 3 Inside	4/25/2024
B3-28	#B3-28 Brook Farm Barn 3 Inside	4/25/2024
B3-29	#B3-29 Brook Farm Barn 3 Inside	4/25/2024
B3-30	#B3-30 Brook Farm Barn 3 Inside	4/25/2024
B3-31	#B3-31 Brook Farm Barn 3 Inside	4/25/2024
B3-32	#B3-32 Brook Farm Barn 3 Inside	4/25/2024
B3-33	#B3-33 Brook Farm Barn 3 Inside	4/25/2024
B3-34	#B3-34 Brook Farm Barn 3 Inside	4/25/2024
B3-35	#B3-35 Brook Farm Barn 3 Inside	4/25/2024
B3-36	#B3-36 Brook Farm Barn 3 Inside	4/25/2024
B3-37	#B3-37 Brook Farm Barn 3 Inside	4/25/2024
B3-38	#B3-38 Brook Farm Barn 3 Inside	4/25/2024
B3-39	#B3-39 Brook Farm Barn 3 Inside	4/25/2024



#B3-25 Brook Farm Barn 3 Inside, 60 Gatehouse Road, New Paltz, NY 12561, 4/25/2024, Ulster



#B3-26 Brook Farm Barn 3 Inside, 60 Gatehouse Road, New Paltz, NY 12561, 4/25/2024, Ulster



#B3-27 Brook Farm Barn 3 Inside, 60 Gatehouse Road, New Paltz, NY 12561, 4/25/2024, Ulster



#B3-28 Brook Farm Barn 3 Inside, 60 Gatehouse Road, New Paltz, NY 12561, 4/25/2024, Ulster



#B3-29 Brook Farm Barn 3 Inside, 60 Gatehouse Road, New Paltz, NY 12561, 4/25/2024, Ulster



#B3-30 Brook Farm Barn 3 Inside, 60 Gatehouse Road, New Paltz, NY 12561, 4/25/2024, Ulster



#B3-31 Brook Farm Barn 3 Inside, 60 Gatehouse Road, New Paltz, NY 12561, 4/25/2024, Ulster



#B3-32 Brook Farm Barn 3 Inside, 60 Gatehouse Road, New Paltz, NY 12561, 4/25/2024, Ulster



#B3-34 Brook Farm Barn 3 Inside, 60 Gatehouse Road, New Paltz, NY 12561, 4/25/2024, Ulster



#B3-33 Brook Farm Barn 3 Inside, 60 Gatehouse Road, New Paltz, NY 12561, 4/25/2024, Ulster



#B3-36 Brook Farm Barn 3 Inside, 60 Gatehouse Road, New Paltz, NY 12561, 4/25/2024, Ulster



#B3-35 Brook Farm Barn 3 Inside, 60 Gatehouse Road, New Paltz, NY 12561, 4/25/2024, Ulster



#B3-37 Brook Farm Barn 3 Inside, 60 Gatehouse Road, New Paltz, NY 12561, 4/25/2024, Ulster



#B3-38 Brook Farm Barn 3 Inside, 60 Gatehouse Road, New Paltz, NY 12561, 4/25/2024, Ulster



#B3-39 Brook Farm Barn 3 Inside, 60 Gatehouse Road, New Paltz, NY 12561, 4/25/2024, Ulster



#B3-1 Brook Farm Barn 3 West, 60 Gatehouse Road, New Paltz, NY 12561, 4/26/2024, Ulster



#B3-2 Brook Farm Barn 3 West Threshold, 60 Gatehouse Road, New Paltz, NY 12561, 4/25/2024, Ulster



#B3-3 Brook Farm Barn 3 West Threshold, 60 Gatehouse Road, New Paltz, NY 12561, 4/25/2024, Ulster



#B3-4 Brook Farm Barn 3 West Threshold, 60 Gatehouse Road, New Paltz, NY 12561, 4/25/2024, Ulster



#B3-5 Brook Farm Barn 3 Northwest underneath, 60 Gatehouse Road, New Paltz, NY 12561, 4/25/2024, Ulster



#B3-6 Brook Farm Barn 3 North, 60 Gatehouse Road, New Paltz, NY 12561, 4/25/2024, Ulster



#B3-7 Brook Farm Barn 3 North, 60 Gatehouse Road, New Paltz, NY 12561, 4/25/2024, Ulster



#B3-8 Brook Farm Barn 3 Northeast underneath, 60 Gatehouse Road, New Paltz, NY 12561, 4/25/2024, Ulster



#B3-9 Brook Farm Barn 3 Northeast, 60 Gatehouse Road, New Paltz, NY 12561, 4/25/2024, Ulster



#B3-10 Brook Farm Barn 3 Northeast, 60 Gatehouse Road, New Paltz, NY 12561, 4/25/2024, Ulster



#B3-11 Brook Farm Barn 3 Northeast underneath, 60 Gatehouse Road, New Paltz, NY 12561, 4/25/2024, Ulster



#B3-12 Brook Farm Barn 3 East Underneath, 60 Gatehouse Road, New Paltz, NY 12561, 4/25/2024, Ulster



#B3-13 Brook Farm Barn 3 East Underneath, 60 Gatehouse Road, New Paltz, NY 12561, 4/25/2024, Ulster



#B3-14 Brook Farm Barn 3 East Underneath, 60 Gatehouse Road, New Paltz, NY 12561, 4/25/2024, Ulster



#B3-15 Brook Farm Barn 3 East Underneath, 60 Gatehouse Road, New Paltz, NY 12561, 4/25/2024, Ulster



#B3-16 Brook Farm Barn 3 East Underneath, 60 Gatehouse Road, New Paltz, NY 12561, 4/25/2024, Ulster



#B3-17 Brook Farm Barn 3 East Underneath, 60 Gatehouse Road, New Paltz, NY 12561, 4/25/2024, Ulster



#B3-18 Brook Farm Barn 3 East, 60 Gatehouse Road, New Paltz, NY 12561, 4/25/2024, Ulster



#B3-19 Brook Farm Barn 3 Southeast, 60 Gatehouse Road, New Paltz, NY 12561, 4/25/2024, Ulster



#B3-21 Brook Farm Barn 3 Inside, 60 Gatehouse Road, New Paltz, NY 12561, 4/25/2024, Ulster



#B3-20 Brook Farm Barn 3 Southeast, 60 Gatehouse Road, New Paltz, NY 12561, 4/25/2024, Ulster



#B3-22 Brook Farm Barn 3 Inside, 60 Gatehouse Road, New Paltz, NY 12561, 4/25/2024, Ulster



#B3-23 Brook Farm Barn 3 Inside, 60 Gatehouse Road, New Paltz, NY 12561, 4/25/2024, Ulster



#B3-24 Brook Farm Barn 3 Inside, 60 Gatehouse Road, New Paltz, NY 12561, 4/25/2024, Ulster

**Mohonk Preserve
Brook Farm Historic Barns Photo Documentation**

**Appendix F:
Photo Index Barn No4**

Current Perspective	Filename / Description	Date
B4-1	#B4-1 Brook Farm Barn 4 Northwest Window	4/25/2024
B4-2	#B4-2 Brook Farm Barn 4 North Window	4/25/2024
B4-3	#B4-3 Brook Farm Barn 4 Northeast Floor	4/25/2024
B4-4	#B4-4 Brook Farm Barn 4 Northeast	4/25/2024
B4-5	#B4-5 Brook Farm Barn 4 Southeast	4/25/2024
B4-6	#B4-6 Brook Farm Barn 4 South	4/25/2024
B4-7	#B4-7 Brook Farm Barn 4 Southwest	4/25/2024



#B4-1 Brook Farm Barn 4 Northwest Window, 60 Gatehouse Road, New Paltz, NY 12561, 4/25/2024, Ulster



#B4-2 Brook Farm Barn 4 North Window, 60 Gatehouse Road, New Paltz, NY 12561, 4/25/2024, Ulster



#B4-3 Brook Farm Barn 4 Northeast Floor, 60 Gatehouse Road, New Paltz, NY 12561, 4/25/2024, Ulster



#B4-4 Brook Farm Barn 4 Northeast, 60 Gatehouse Road, New Paltz, NY 12561, 4/25/2024, Ulster



#B4-5 Brook Farm Barn 4 Southeast, 60 Gatehouse Road, New Paltz, NY 12561, 4/25/2024, Ulster



#B4-6 Brook Farm Barn 4 South, 60 Gatehouse Road, New Paltz, NY 12561, 4/25/2024, Ulster



#B4-7 Brook Farm Barn 4 Southwest, 60 Gatehouse Road, New Paltz, NY 12561, 4/25/2024, Ulster

Mohonk Preserve
Brook Farm Historic Barns Photo Documentation

Appendix G:
Existing Barn Inspections
Stinemire Engineering
(July 2023)

Mohonk Preserve
Brook Farm Historic Barns Photo Documentation

Appendix H:
Existing Conditions Report for Brook Farm House
Coppola Associates
(July 2023)

Mohonk Preserve
Brook Farm Historic Barns Photo Documentation

Appendix I:
Site Development Plan Letter of Resolution: 23PR04935

(NYS Department of Environmental Conservation, NYS Energy Research and Development Authority, NYS Office of Parks, Recreation and Historic Preservation, & Mohonk Preserve)

Mohonk Preserve
Brook Farm Historic Barns Photo Documentation

Appendix J:
Brook Farm Complex Redevelopment Plan
Barton & Loguidice

Existing Conditions
Master Site Plan
Phase 1: Demolition and Removal Plan